

9

Webinar  
abril 2026  
10:00-12:00 GMT

Metodologias e ferramentas para a criação de corredores ecológicos e expansão de áreas protegidas:  
o contributo do projeto NaturaConnect

© Sandra Grego | EUROPARC Federation



Funded by  
the European Union

NaturaConnect receives funding under the European Union's Horizon Europe research and innovation programme under grant agreement number 101060429



## PROGRAMA

10:00 Boas-vindas; introdução ao projecto NaturaConnect  
**Bárbara Pais, Universidade de Évora**



10:10 Principais desafios para o incremento da conectividade ecológica no contexto Europeu: o contributo do projeto NaturaConnect  
**Francisco Moreira, CIBIO**



10:30 Pan-European Connectivity for Terrestrial Biodiversity: Prioritization of Continental Connections  
**Jeremy Dertien, iDiv**

10:50 Pressão humana, resiliência climática e robustez analítica numa rede otimizada de corredores ecológicos em Portugal  
**Diogo Alagador, Universidade de Évora**



11:10 Reflexão final: aplicações práticas do projeto em Portugal na perspectiva do ordenamento do território  
**Rosário Oliveira, Instituto de Saúde Ambiental da Universidade de Lisboa e Laboratório Associado TERRA**

11:20 Debate com oradores e participantes. Moderado por Bárbara Pais

12:00 Final da sessão

# Sobre o projeto NaturaConnect

Contexto

Estratégia Europeia da Biodiversidade 2030

Áreas protegidas e conectividade, regulamento restauro da natureza

Objetivo do projeto

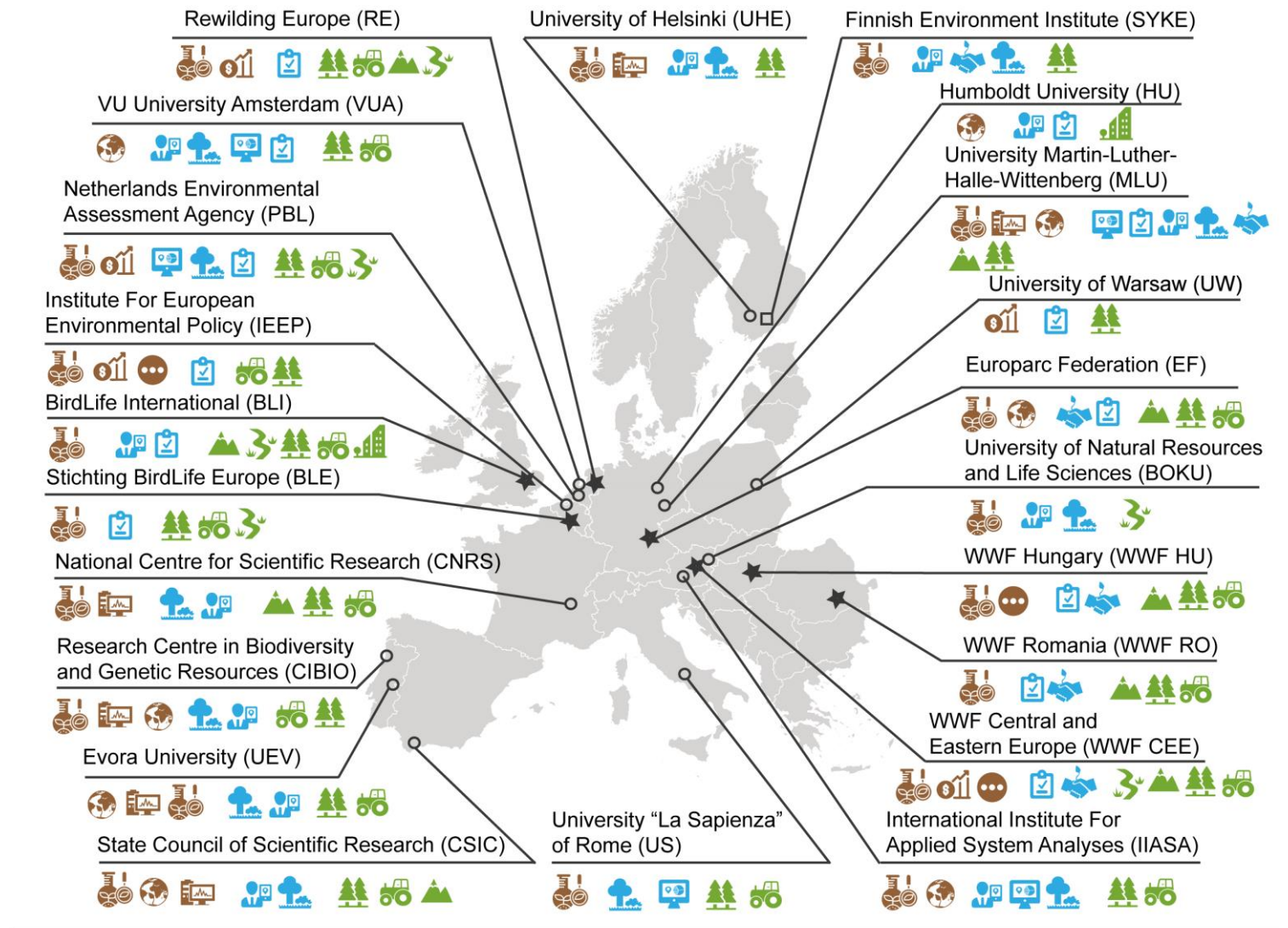
Apoiar decisores-chave e partes interessadas dos Estados-Membros da UE com conhecimento e ferramentas para planear uma **Rede Transeuropeia de Natureza** (TEN-N) ecologicamente representativa, resiliente e bem conectada.



# 22 Parceiros

15 Centros e Investigação e Universidades  
7 ONGs e Agências Nacionais

NaturaConnect Consortium



### Partner type

- University / Research
- Government / Public
- ★ NGO

### Disciplinary background

- 🔬 Ecology & env. science
- 🌍 Geography & social science
- 💰 Economics & management
- 💻 Mathematics & computer science
- 🗨️ Other

### Areas of expertise

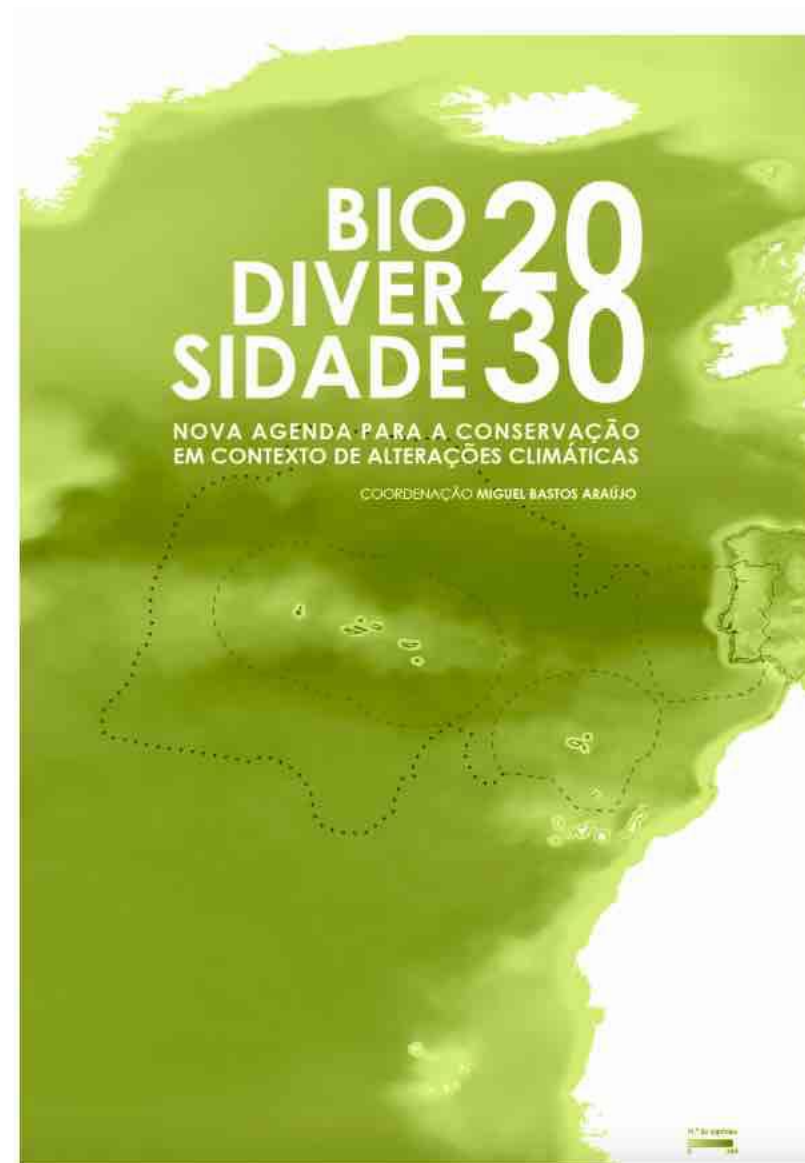
- 🤝 Stakeholder engagement
- 📺 Scenarios
- 🌳 Predictive ecology
- 📍 Spatial planning
- 📄 Policy support

### Ecosystem type

- ⛰️ Mountain
- 🌊 Freshwater
- 🌲 Forest
- 🚜 Agriculture
- 🏙️ Urban

# NaturaConnect em Portugal

- Identificar, colaborativamente, **barreiras ao cumprimento** das metas estipuladas para a EEB 2030
- Capacitação e transferência de conhecimento
  - Conectividade ecológica na perspetiva do OT
  - Planeamento sistemático para a conservação
  - Gestão adaptativa de áreas protegidas
  - Restauro Ecológico
- Análise para uma rede otimizada de corredores ecológicos em Portugal



[https://www.researchgate.net/publication/360720169\\_Biodiversidade\\_2030\\_Nova\\_agenda\\_para\\_a\\_conservacao\\_em\\_contexto\\_de\\_alteracoes\\_climaticas](https://www.researchgate.net/publication/360720169_Biodiversidade_2030_Nova_agenda_para_a_conservacao_em_contexto_de_alteracoes_climaticas)

# Think Tank NaturaConnect.PT

Mapear o sistema regulatório na área da conservação e ordenamento do território para entender interrelações.

Definir prioridades de intervenção para desbloquear barreiras e potenciar sinergias positivas para implementação da EEB 2030.



## 1ª sessão

Desafios à implementação da estratégia europeia da biodiversidade

## 2ª sessão

Financiamento para a conservação da biodiversidade

## 3ª sessão

O desafio da conservação estrita de 10% do território

**NATURA CONNECT**

**Propostas de financiamento para a conservação da biodiversidade em contexto de alterações climáticas em Portugal**

Agosto 2024

UNIVERSIDADE DE ÉVORA | Cátedra Rui Nabeiro biodiversidade | cibio

**NATURA CONNECT**

**SESSÕES DE CAPACITAÇÃO NATURA CONNECT**

- 14 JULHO**  
Planeamento Sistemático para a Conservação da Biodiversidade  
*com Miguel Bastos Araújo e Diogo Alagador Universidade de Évora*
- 15 JULHO**  
Gestão ativa e adaptativa de áreas protegidas e classificadas: Cogestão 2.0?  
*com Rosário Oliveira, ICS - Universidade de Lisboa*
- 16 JULHO**  
Restauro Ecológico  
*com Carla Pinto-Cruz, MED - Universidade de Évora*



Évora, Portugal  
14 • 15 • 16 JULHO 2025



# Recursos



<https://naturaconnect.eu/deliverables/>



[tinyurl.com/ENA-NC](https://tinyurl.com/ENA-NC)

# NaturaConnect Learning Platform

The project capacity building hub supports professional development to design and implement the Trans-European Nature Network (TEN-N).

It provides easy access to training modules and learning resources for stakeholder engagement, spatial conservation planning and more.



## Section 1 - Concepts

Background information.

### Modules

- 1.1. Trans-European NatureTEN-N) Network (
- 1.2. Cross-sectoral Policy Frameworks
- 1.3. Nature Futures Framework (NFF)
- 1.4. Connectivity Conservation
- 1.5. Integrated Spatial Planning



## Section 2 - Governance

Processes and instruments.

### Modules

- 2.1. Stakeholder Engagement
- 2.2. Financial Instruments
- 2.3. Political Economy Analysis (PEA)



## Section 3 - Technical Tools

Project outcomes.

### Modules

- 3.1. Biodiversity Modelling
- 3.2. Scenarios on Land Use and Climate Change
- 3.3. Connectivity Analyses
- 3.4. Spatial Planning for Protected and Restoration Areas

# Seminário

## Contributo de Portugal para uma rede transeuropeia de áreas de conservação

22 de maio – 14h-18h

Évora, Palácio de D. Manuel



### PROGRAMA

- 14:00 Registo e café
- 14:15 **Sessão de Abertura**  
Carlos Zorinho, Presidente da Câmara Municipal de Évora
- 14:30 **Resultados do projeto NaturaConnect na Europa**  
Henrique Pereira, iDiv
- 15:00 **Resultados do projeto NaturaConnect em Portugal**  
Bárbara Pais, NaturaConnect
- 15:10 **Desafios e oportunidades para o financiamento da natureza**  
Daniel Veríssimo, Rewilding Europe
- 15:40 **Desafios e oportunidades para a conservação estrita de 10% do território**  
Miguel Bastos Araújo, Cátedra da Biodiversidade, Universidade de Évora
- 16:10 **Coffee break**
- 16:30 **Mesa Redonda: Os desafios e oportunidades da implementação da Estratégia Europeia da Biodiversidade em Portugal**  
Miguel Henriques, ICNF  
Fátima Bacharel, Direcção-Geral do Território  
Alfredo Sendim, Área Protegida Privada Herdade Freixo do Meio  
João Barroso, Comissão Vitivinícola Regional Alentejana  
Pedro Bingre, Liga para a Protecção da Natureza
- 17:30 **Discurso de Encerramento**  
Maria da Graça Carvalho, Ministra do Ambiente e Energia
- 17:45 **Cocktail e networking**
- 18:00 **Fim da sessão**



**Metodologias e ferramentas para a criação de corredores ecológicos e expansão de áreas protegidas: o contributo do projeto NaturaConnect**



NaturaConnect receives funding under the European Union's Horizon Europe research and innovation programme under grant agreement number 101060429

Obrigada pela atenção.

Bárbara Pais

[barbara@naturedialogues.pt](mailto:barbara@naturedialogues.pt)

[www.naturaconnect.eu](http://www.naturaconnect.eu)



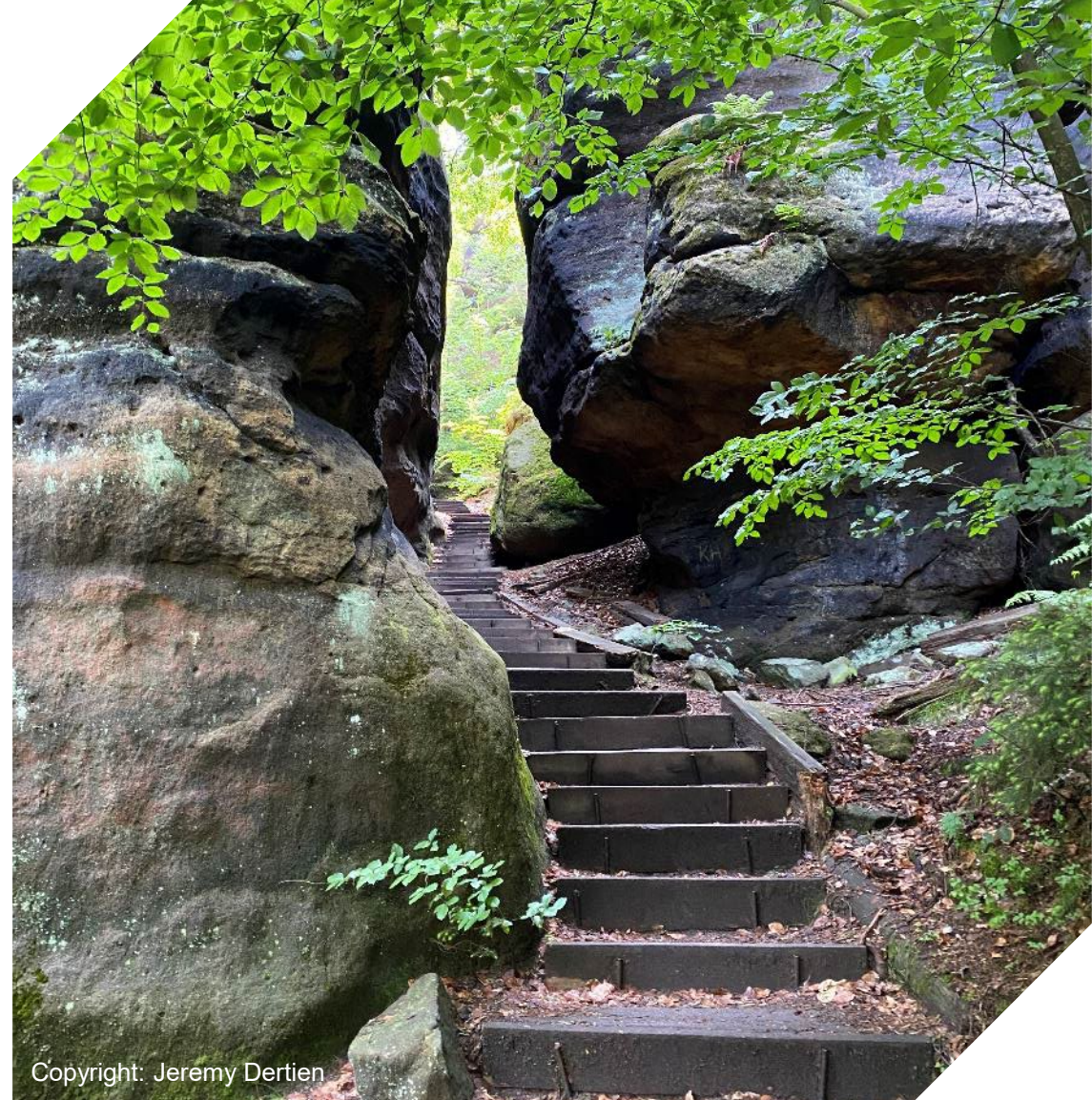


# Pan-European Connectivity for Terrestrial Biodiversity: Prioritization of Continental Connections

Jeremy Dertien

German Integrative Biodiversity Research Institute (iDiv) & Martin Luther Universität Halle-Wittenberg

[jeremy.dertien@idiv.de](mailto:jeremy.dertien@idiv.de)



Copyright: Jeremy Dertien



Funded by  
the European Union

NaturaConnect receives funding under the European Union's Horizon Europe research and innovation programme under grant agreement number 101060429. The contents of this material are the sole responsibility of the NaturaConnect consortium and do not necessarily reflect the opinion of the European Union.

09/04/2026

# Connectivity Introduction

## A measure of spatial continuity

- Habitat fragmentation is reducing viable habitat
  - *Linear infrastructure*
  - *Impervious cover & unsuitable habitat*
- Fragmentation can reduce:
  - *Genetic diversity*
  - *Reproduction*
  - *Population abundance*
  - *Nutrient flows*

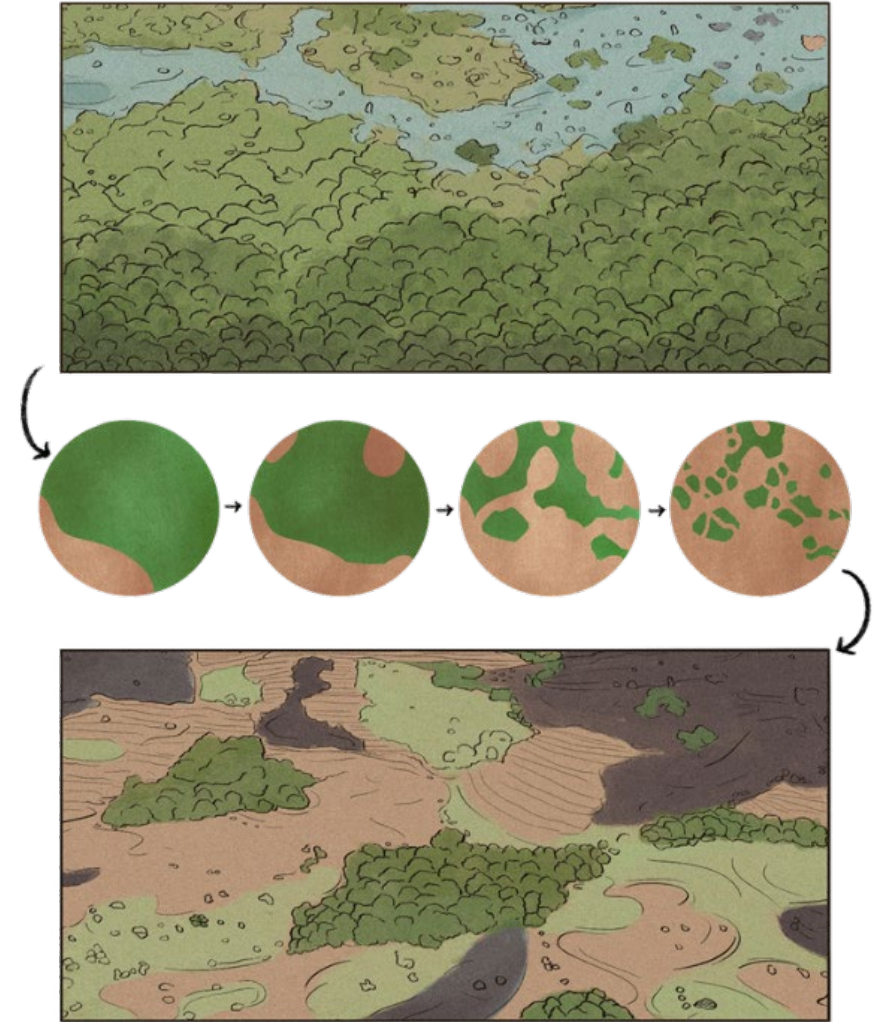


*Wildlife Conservation Society, 2020*

# Connectivity Introduction

## A measure of spatial continuity

- Habitat fragmentation is reducing viable habitat
  - *Linear infrastructure*
  - *Impervious cover & unsuitable habitat*
- Fragmentation can reduce:
  - *Genetic diversity*
  - *Reproduction*
  - *Population abundance*
  - *Nutrient flows*
- Wide variety of time scales
  - *Individual movement → a century of genetic flow*
  - *Climate change range shifts*



*Wildlife Conservation Society, 2020*

# Connectivity & Global Conservation Policy

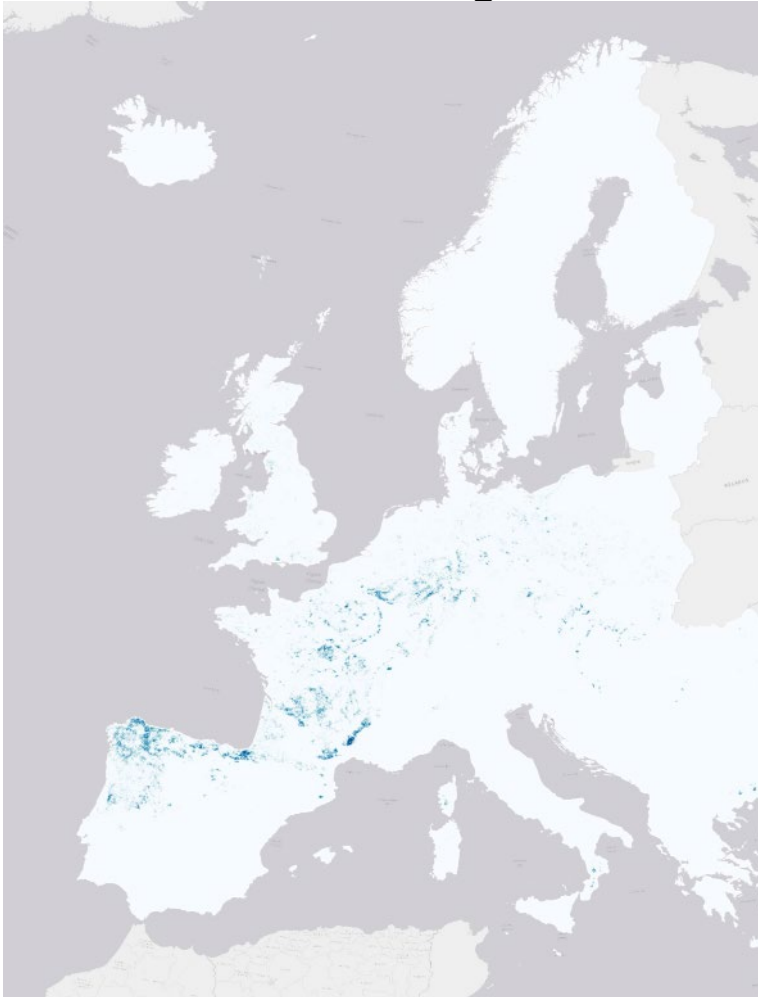
- EU Biodiversity Strategy goal to enlarge protected area network to 30% of land and ocean area.
  - Connected Trans-European Nature Network (TEN-N)
- Connectivity a consideration in:
  - Global Biodiversity Framework
  - EU Forestry Strategy
  - Green & Blue Infrastructure Strategy
  - Water Framework Directive
  - EU Pollinators Initiative
  - EU Nature Restoration Regulation



# Address multiple purposes of connectivity planning

## Structural connectivity

EUNIS habitats fragmentation



## Functional connectivity

for various species archetypes



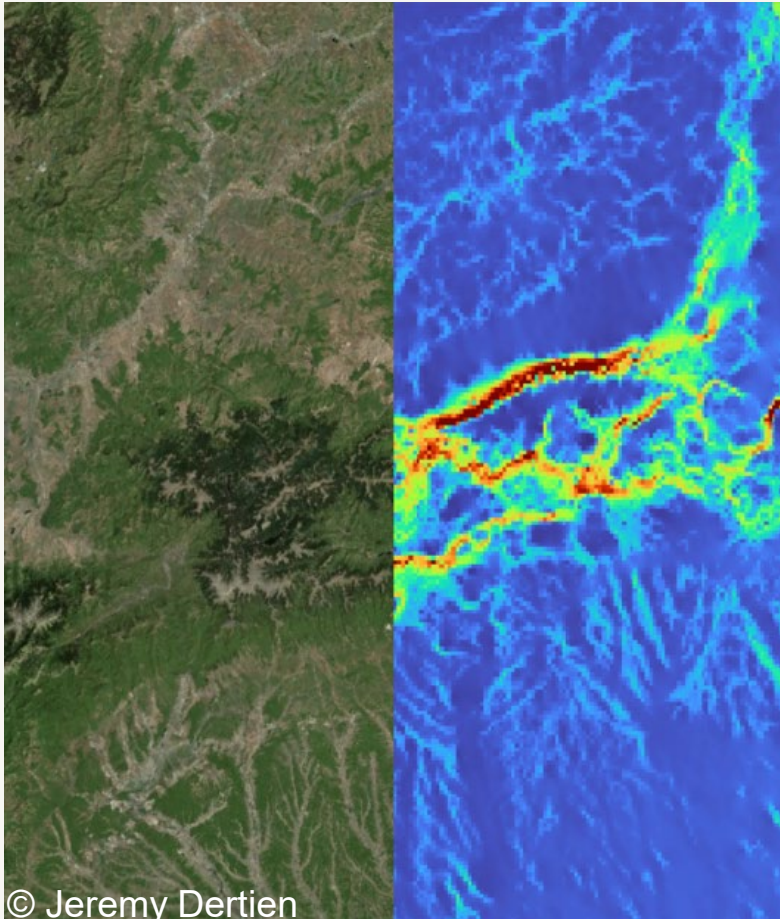
# Why Does it Matter?

## How is it useful?

- Understanding of each region's role in a connectivity network
  - More evidence for the importance of protection
- Incorporate greater biodiversity
  - Not just select large mammals
- Provide multiple connectivity datasets
  - Different connectivity interests or plans



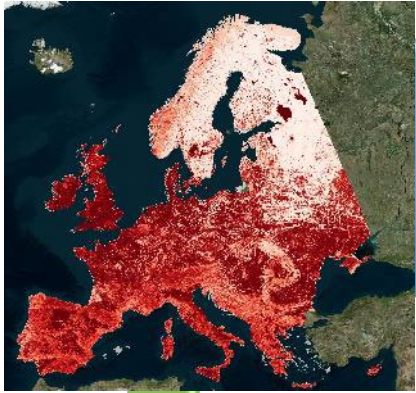
# Natura Connect Functional Connectivity Goals



© Jeremy Dertien

- Multi-taxa terrestrial wall-to-wall connectivity maps
- Structural EUNIS habitat connectivity
- Freshwater connectivity maps
- Prioritization of corridors between protected areas

# Process Overview



- Species Distribution Models
- Add-in Resistance

Omnidirectional Connectivity

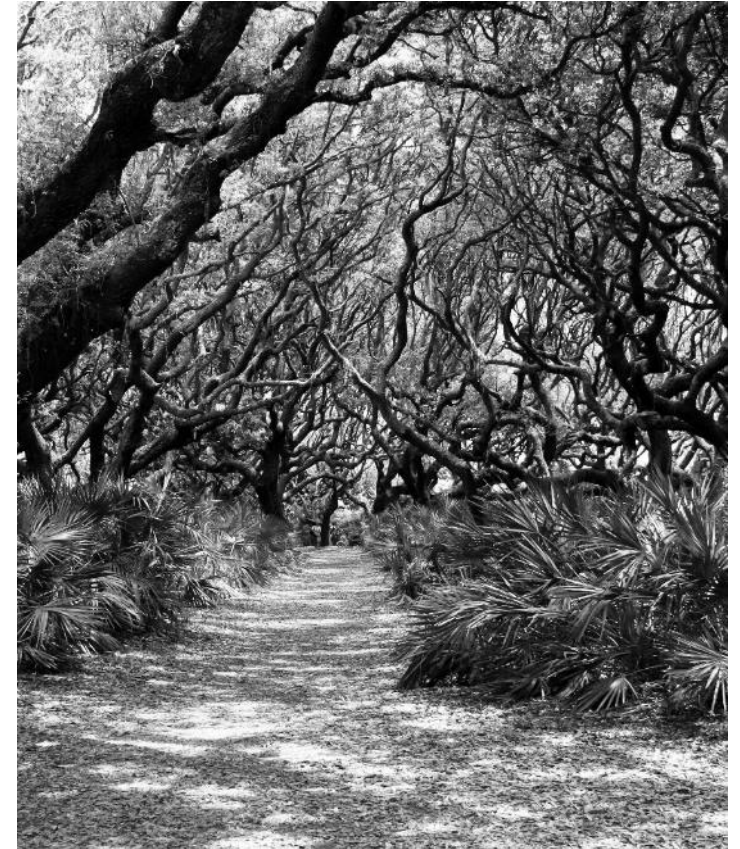
- Omniscape Modelling

Protected Area Corridors

- Clustering Natura 2000, Emerald Network, etc.
- Randomized-shortest paths

Corridor Prioritization

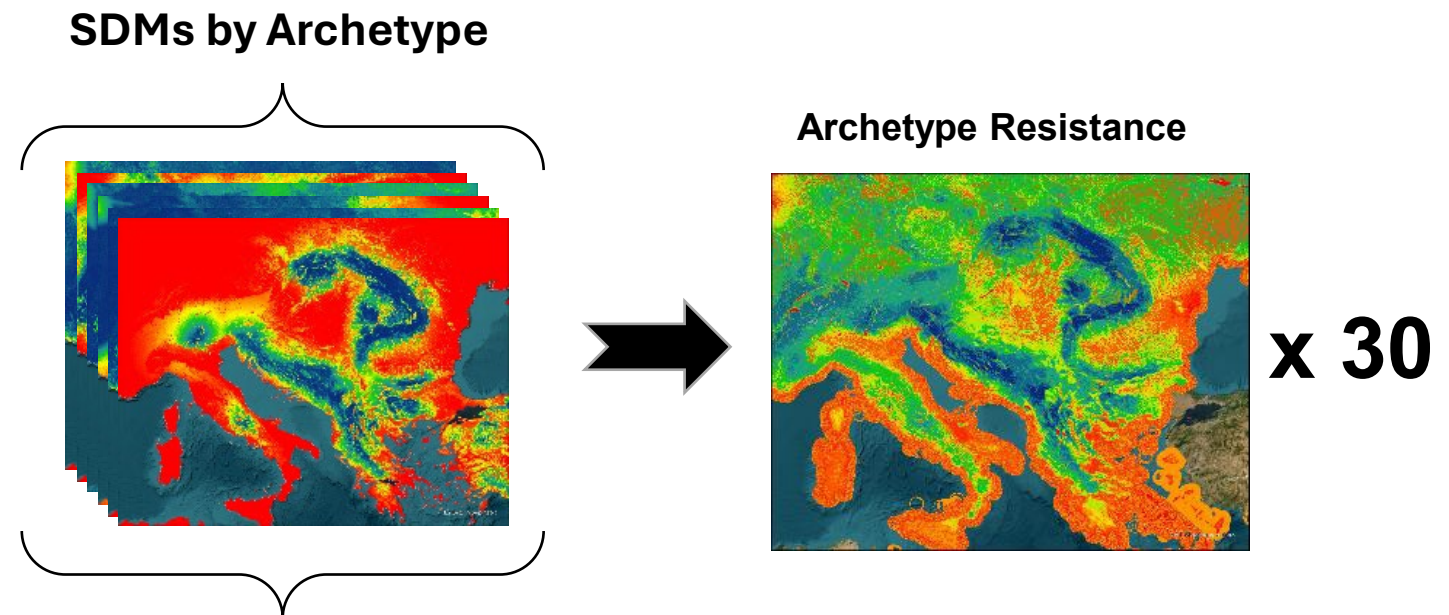
- Combination graph metrics and Omniscape



# Species Archetypes

## Developing the Resistance

- Ensemble SDMs for 953 species
- Divided into 30 species archetypes across:
  - Bats
  - Birds
  - Frogs
  - Mammals (non-flying)
  - Snakes
  - Lizards
  - Turtles & tortoises



# Process Overview



- Species Distribution Models
- Add-in Resistance



- Omniscape Modelling

Protected Area Corridors

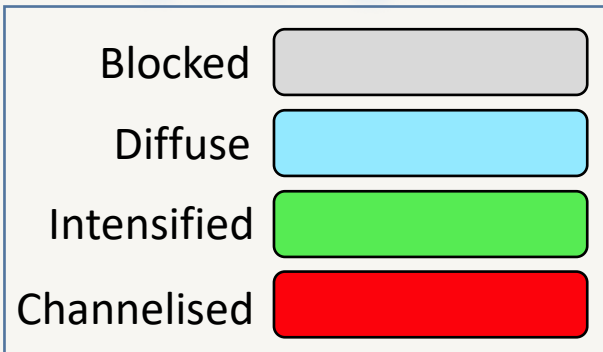
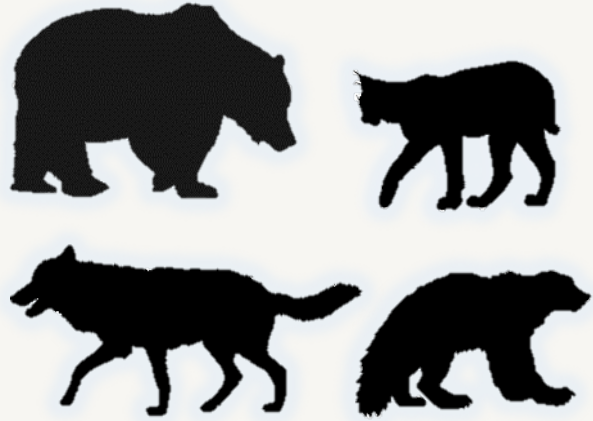
- Clustering Natura 2000, Emerald Network, etc.
- Randomized-shortest paths

Corridor Prioritization

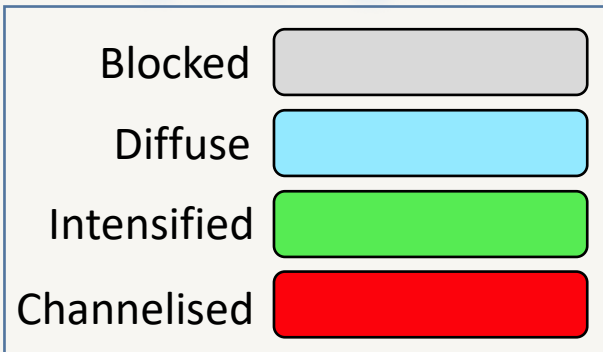
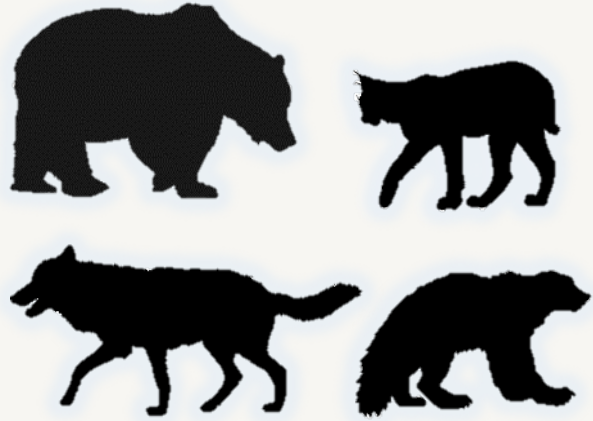
- Combination graph metrics and Omniscape



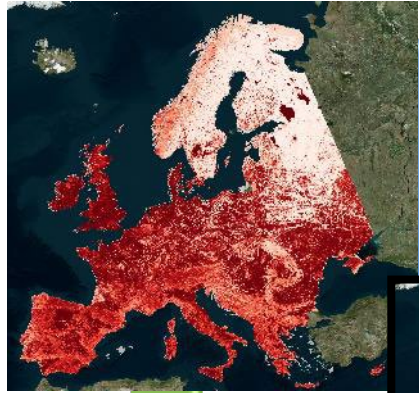
# Predator Normalized Current Density



# Predator Normalized Current Density



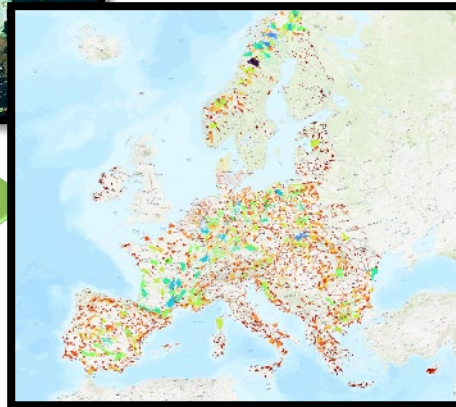
# Process Overview



- Species Distribution Models
- Add-in Resistance



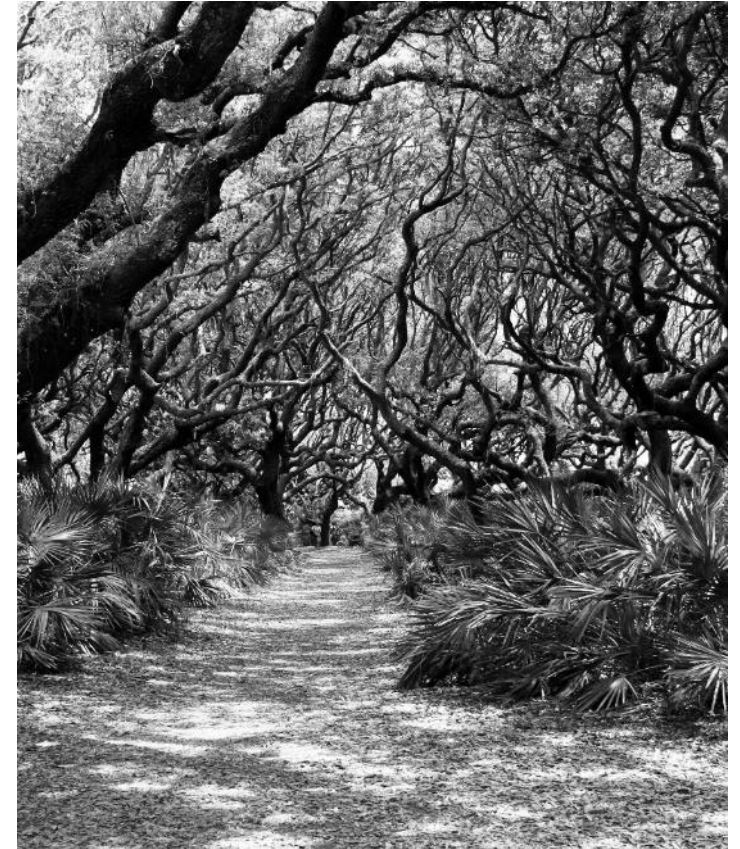
- Omniscape Modelling



- Clustering Natura 2000, Emerald Network, etc.
- Randomized-shortest paths

Corridor  
Prioritization

- Combination graph metrics and Omniscape



# Prioritising Ecological Corridors

## Change in Probability of Connectivity (*dPC*)

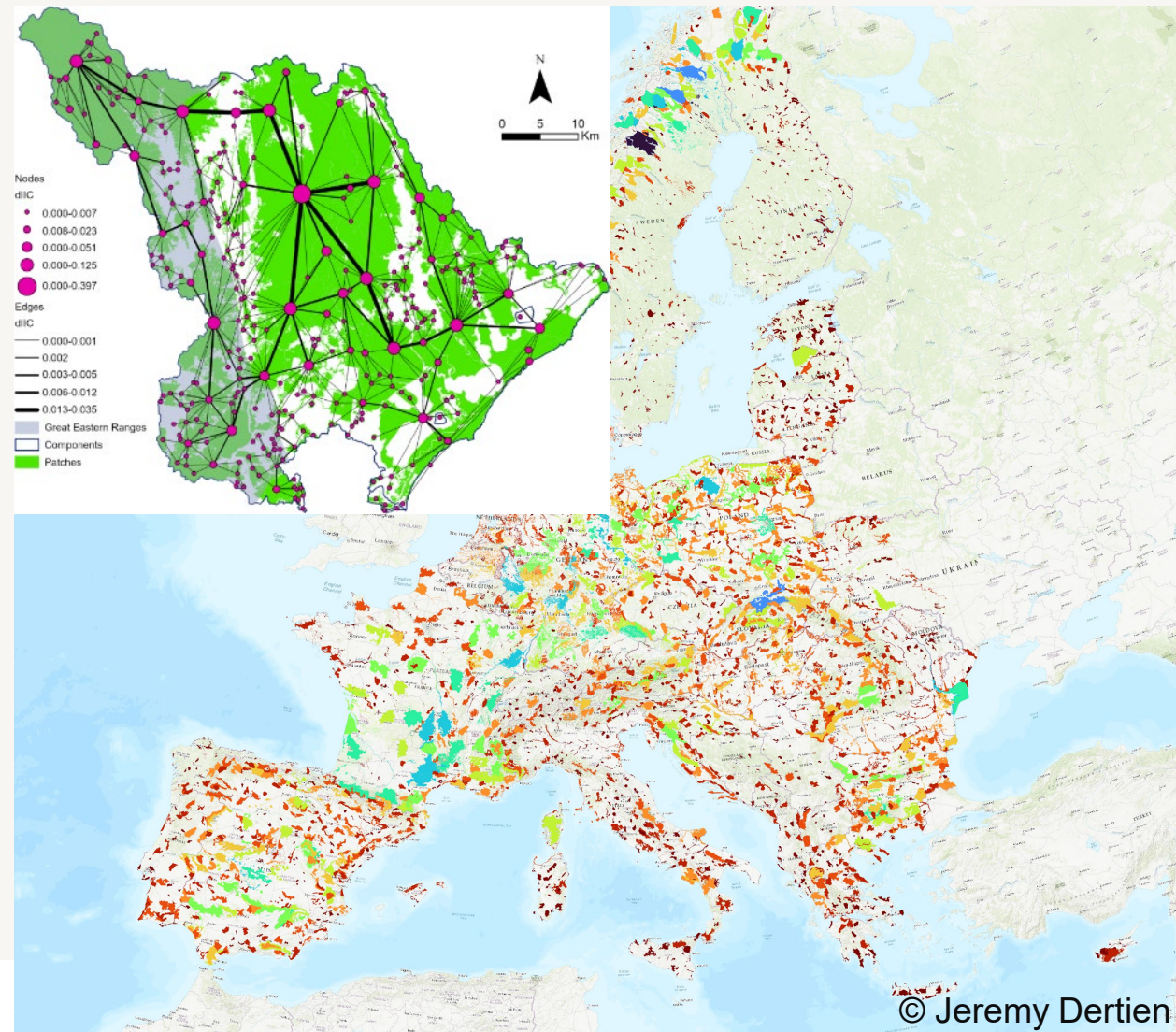
- Graph-theory connectivity metrics
- Measure of individual PA or linkage importance
- Assist with prioritisation
- Simpler measure of connectivity

- Valuation by PA area (km<sup>2</sup>)
- Dispersal Max. 50 km

Higher *dPC*



Lower *dPC*



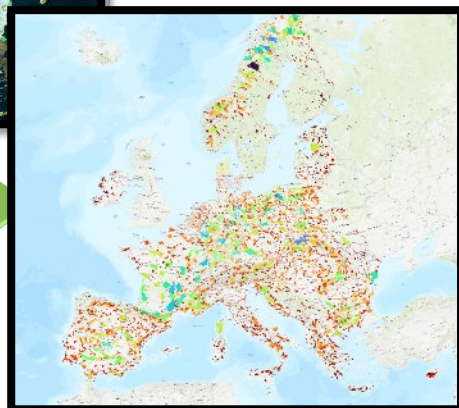
# Process Overview



- Species Distribution Models
- Add-in Resistance



- Omniscape Modelling



- Clustering Natura 2000, Emerald Network, etc.
- Prob. Of Connectivity (dPC)

Corridor  
Prioritization

- Randomized-shortest paths
- Combination graph metrics and Omniscape

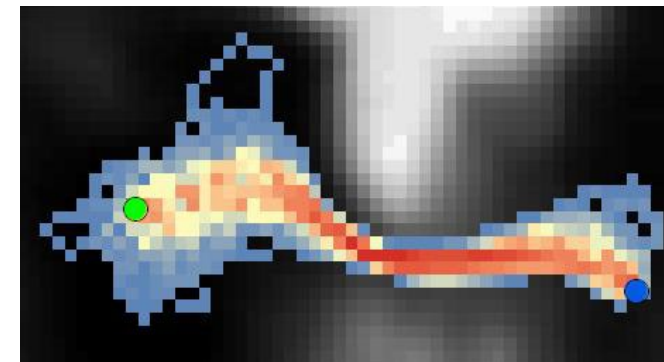
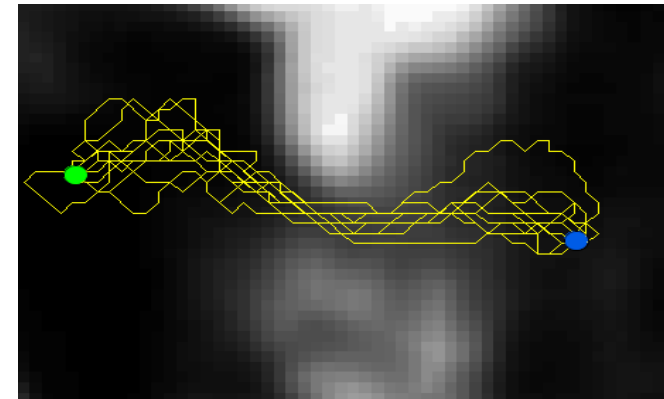


# Connectivity Models

## Utilization of 3 Methods

- Omnidirectional electrical-circuit connectivity
  - Omniscape moving-window analysis
  - Does not require protected area locations
- Graph-theory Metrics
  - Probability of Connectivity ( $dPC$ )
  - Used for both nodes & links
- Randomised-shortest Path
  - Hundreds of path iterations between nodes
  - Path area = **ecological corridor**

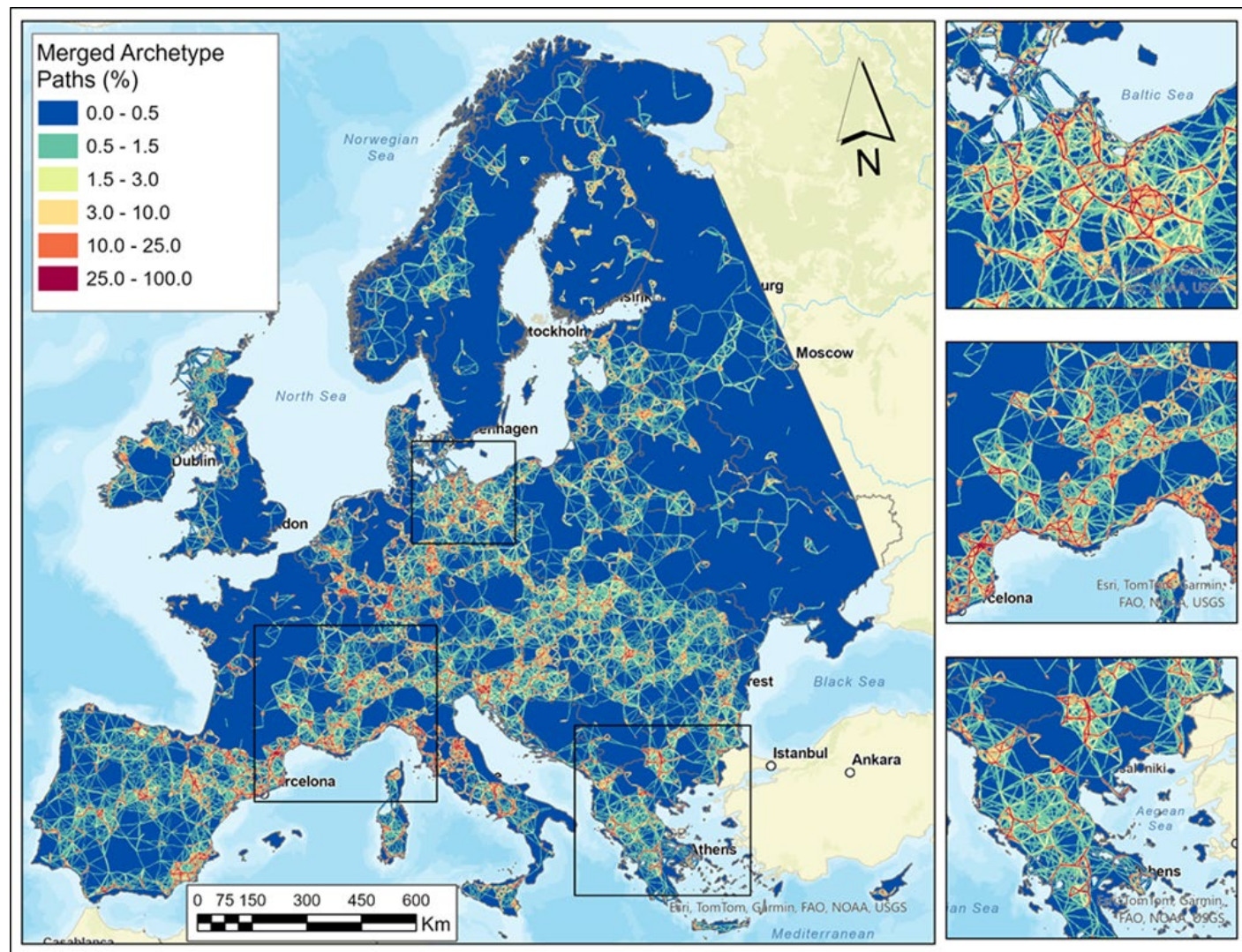
### Randomised-shortest Paths



# Protected Area Ecological Corridors

## Overlap of Vertebrate Connectivity

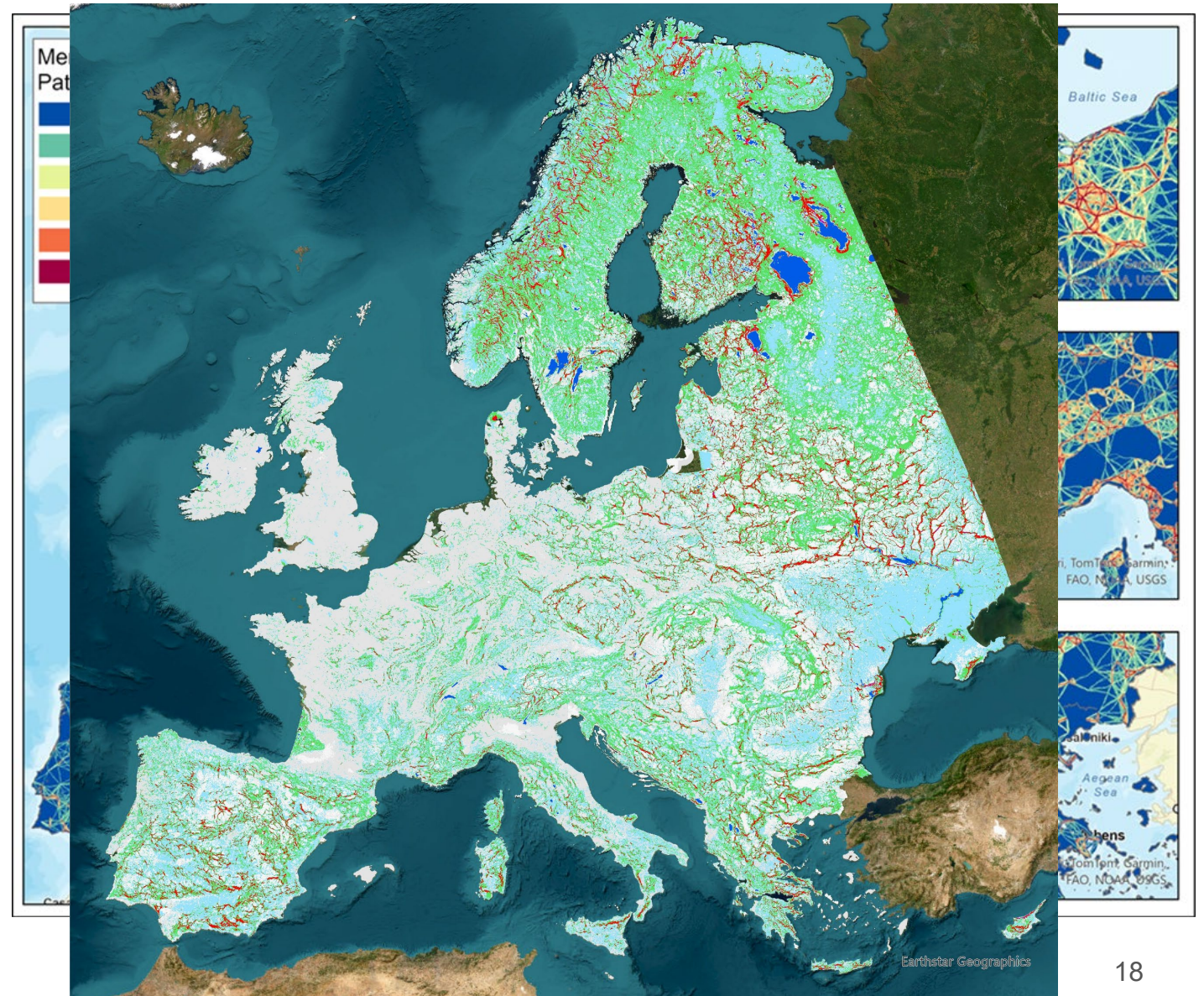
- Final overlay of corridors for 30 species archetypes (~76,000 corridors)
- Useable corridor data for single archetype or all vertebrate biodiversity
- ~600,000 km<sup>2</sup> to completely protect one-third of vertebrate connectivity
  - ~900k km<sup>2</sup> for total vertebrate conservation



# Protected Area Ecological Corridors

## Overlap of Vertebrate Connectivity

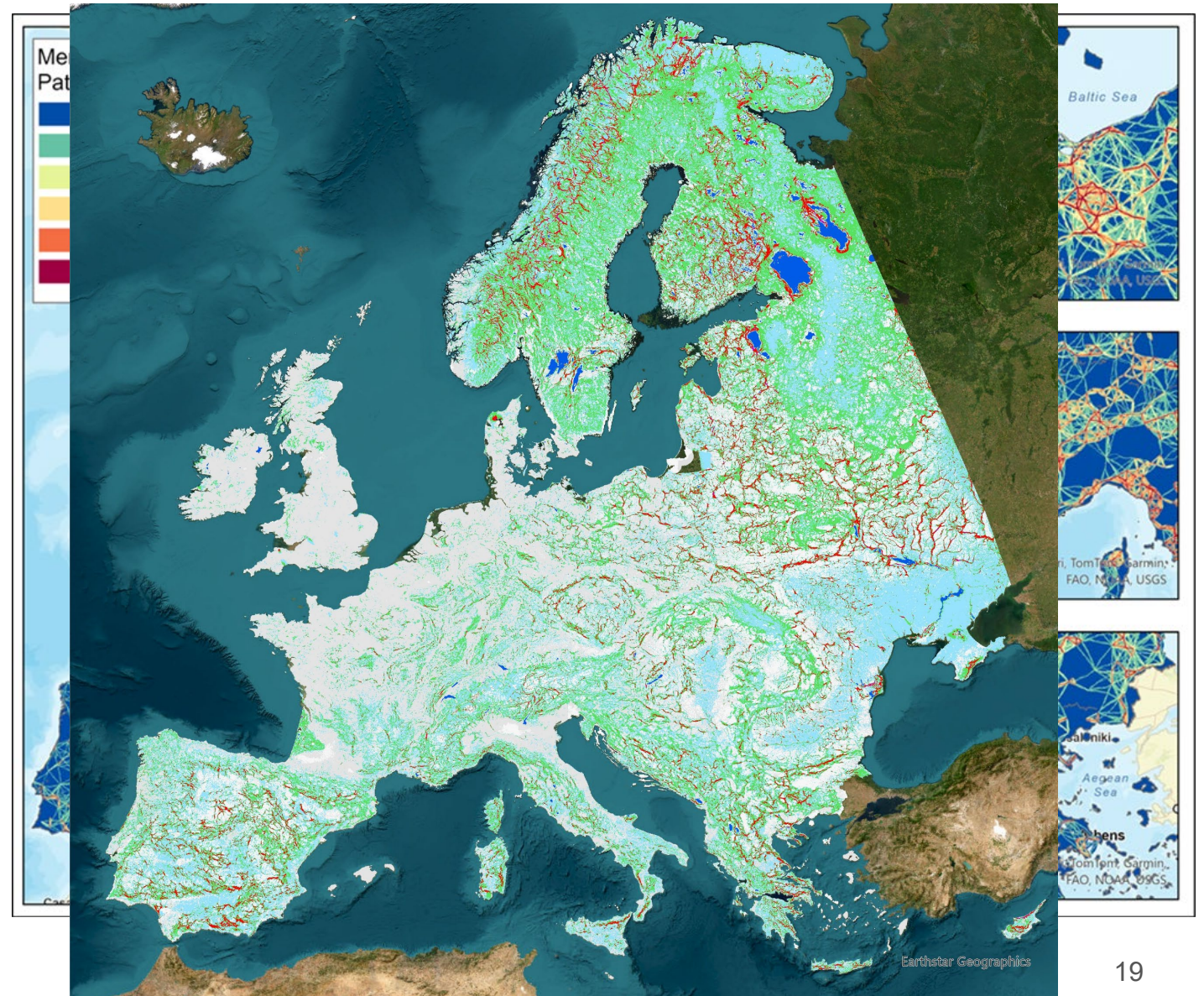
- Highest corridor overlaps in Italy, N. Germany, and Pyrenees to Rhône Valley
- Major overlap Mediterranean biogeographic region
- Large connectivity gaps in central France and Czechia, eastern Poland and the UK
  - Finland and Sweden



# Protected Area Ecological Corridors

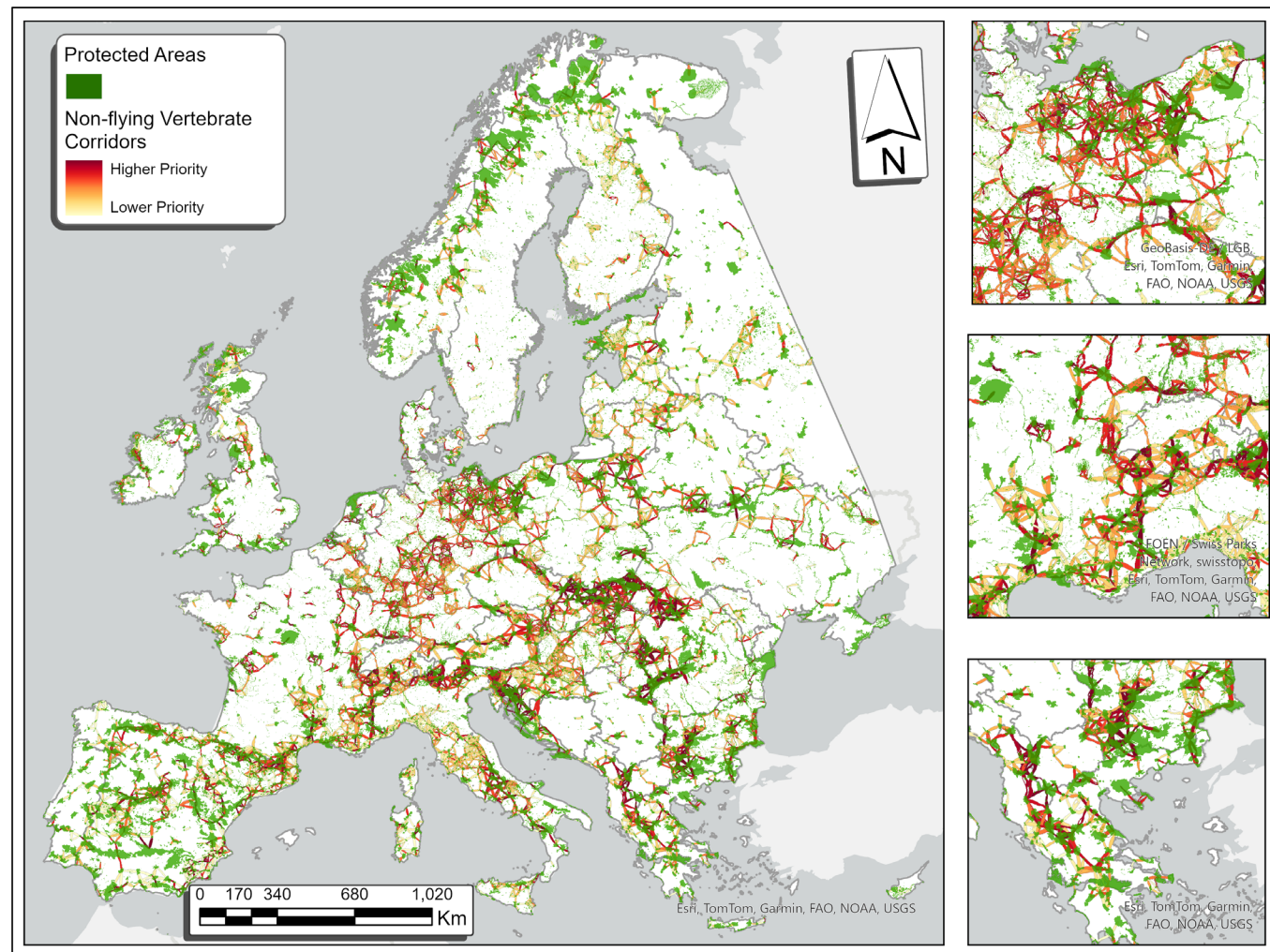
## Overlap of Vertebrate Connectivity

- Highest corridor overlaps in Italy, N. Germany, and Pyrenees to Rhône Valley
- Major overlap Mediterranean biogeographic region
- Large connectivity gaps in central France and Czechia, eastern Poland and the UK
  - Finland and Sweden



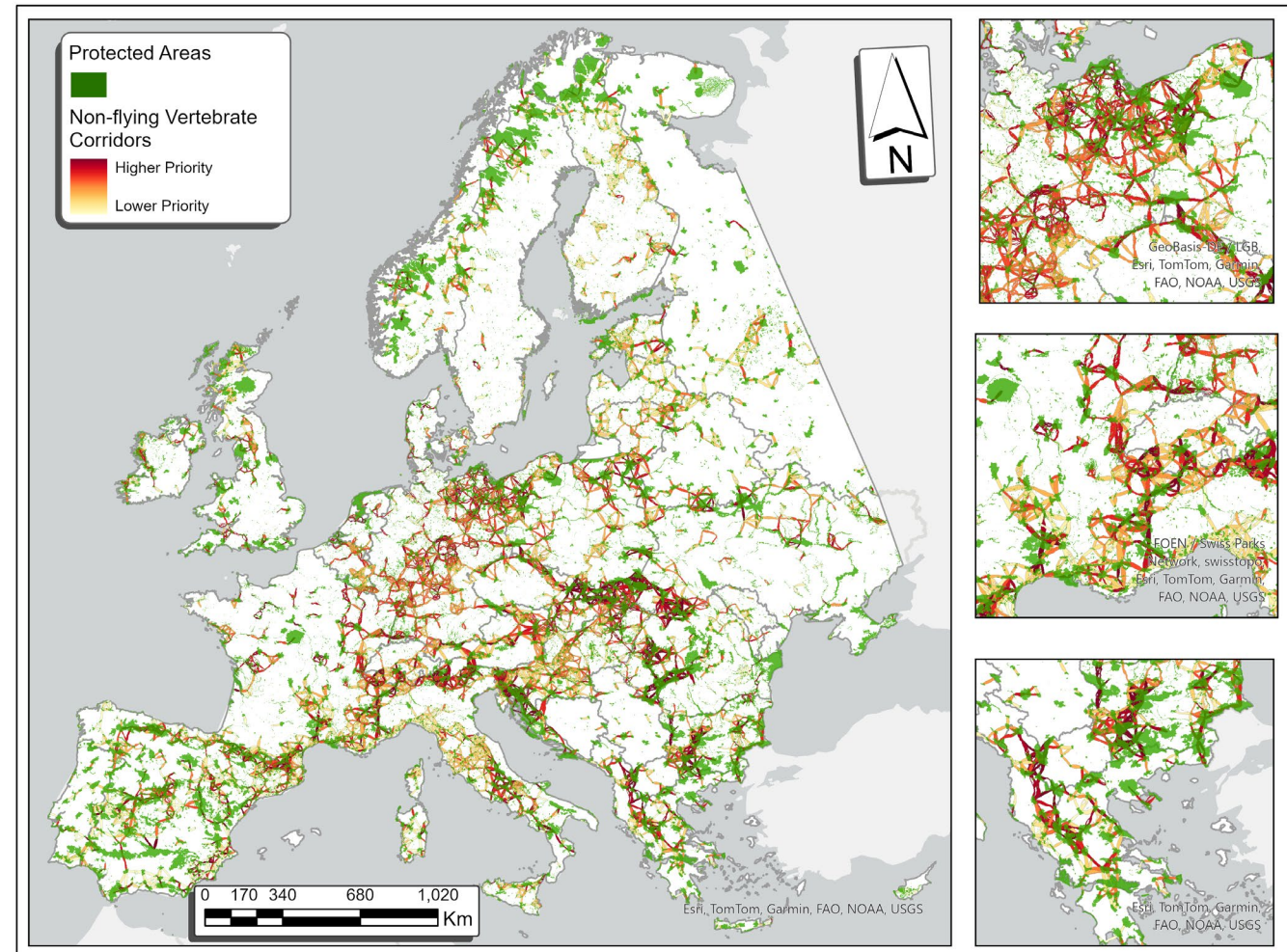
# Continental Corridor Priorities

- Bring the different metrics together
  - Priority corridor index
- Priorities across Europe
  - Concentrations in large mountainous PAs, especially transboundary
- Mediterranean biogeographic region especially a priority for most terrestrial vertebrates



# Application of Results

- Provides regional and continental perspective of overall connectivity network
- Landscape planning, national conn. goals, etc.
- Multiple tiers of information on connectivity available for 30 species groups
  - Cost distance
  - dPC-node & dPC-link
  - Omnidirectional connectivity
  - Binary corridor space
  - Prioritized ecological corridors





# Principais desafios para o incremento da conectividade ecológica no contexto Europeu: o contributo do NaturaConnect

**Francisco Moreira**

CIBIO-BIOPOLIS  
fmoreira@cibio.up.pt



Funded by  
the European Union

NaturaConnect receives funding under the European Union's Horizon Europe research and innovation programme under grant agreement number 101060429. The contents of this material are the sole responsibility of the NaturaConnect consortium and do not necessarily reflect the opinion of the European Union.

# Knowledge support for implementing the European Biodiversity Strategy 2030



Legally protect at least **30%** of the land.  
At least **1/3** strictly protected



Implement **restoration measures** on **20%** of land



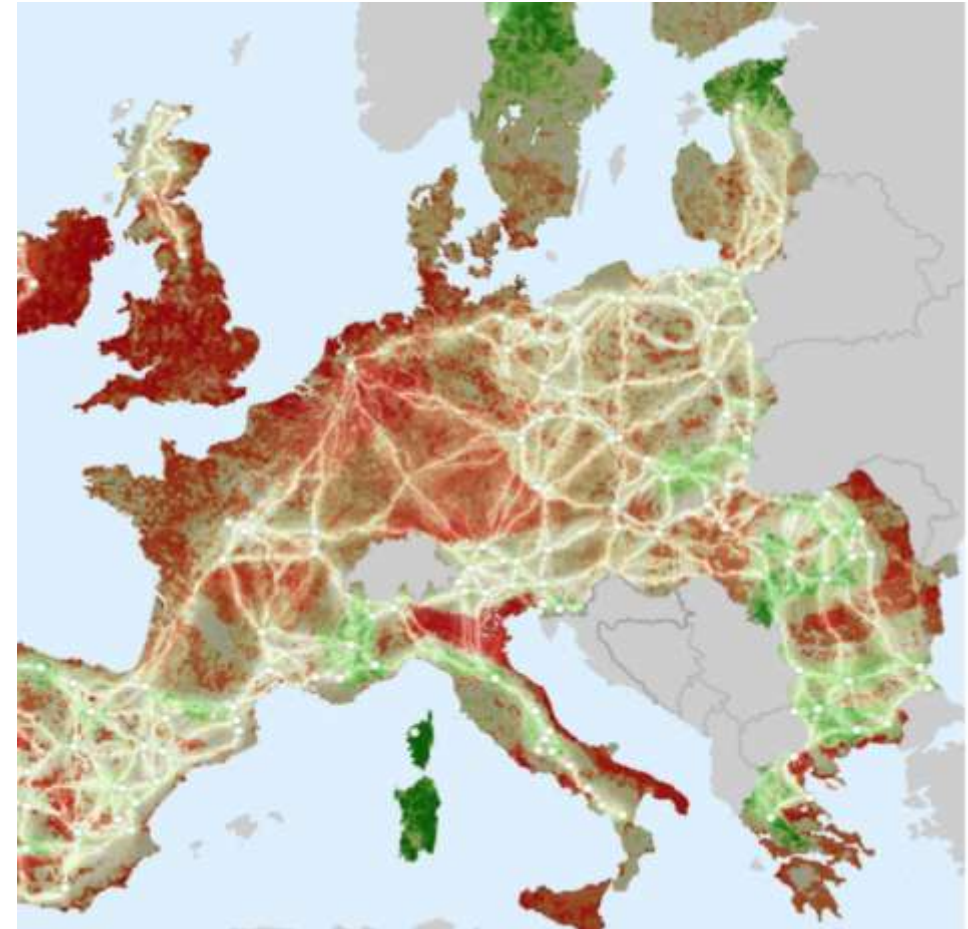
Enhance **ecological connectivity** and increase the **network resilience** to changes

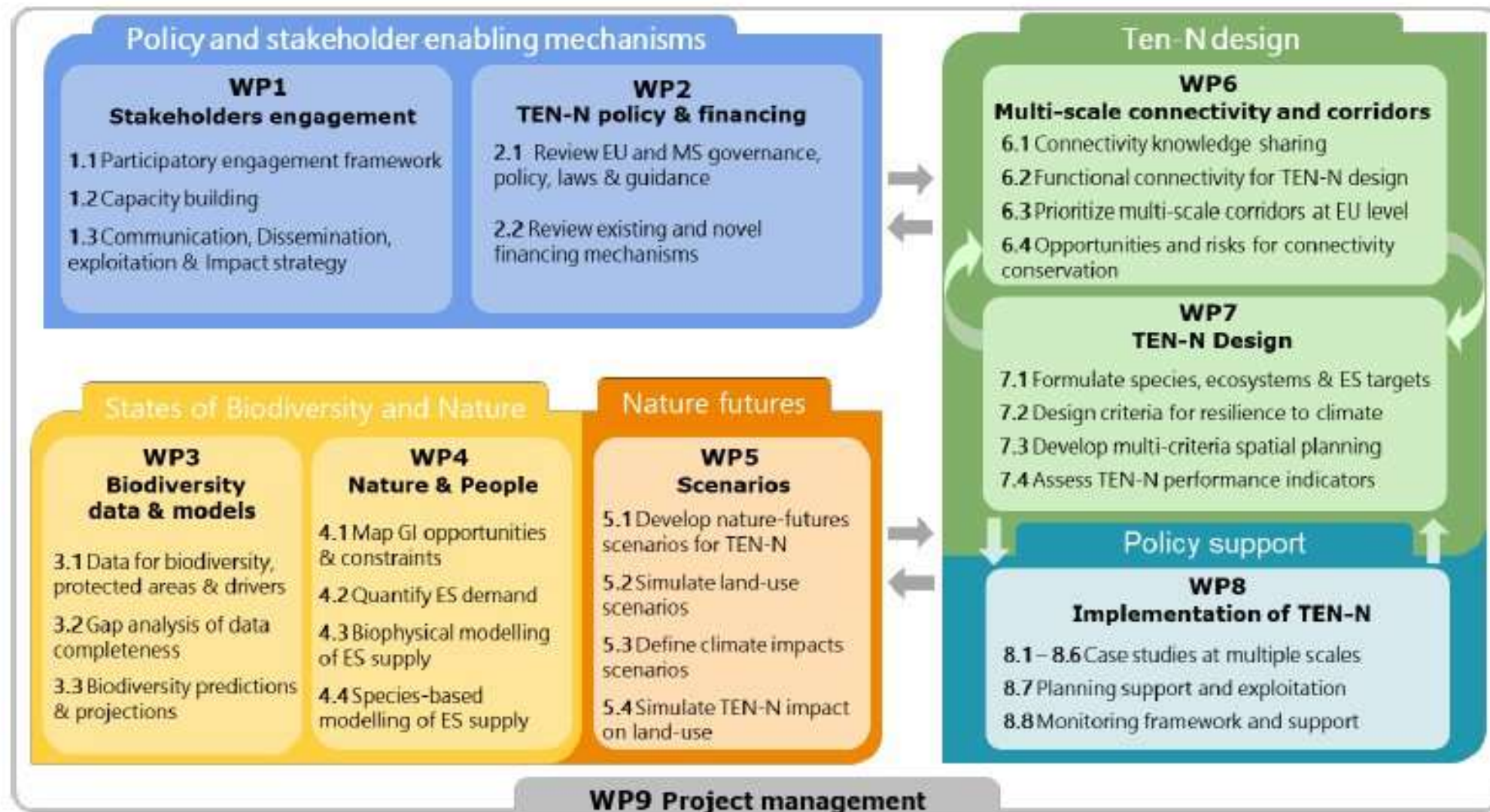


# Objective 2

Define a blueprint for protecting and restoring multifunctional corridors

- **Guidelines, data and tools for connectivity conservation** from local to pan-European scales
- **Restoration priorities** to increase the **resilience** of the network





# WP6: Multi-scale nature connectivity and corridors designs

WP lead: Néstor Fernández (MLU); WP co-lead: Francisco Moreira (CIBIO)

## Lead



MARTIN-LUTHER-UNIVERSITÄT  
HALLE-WITTENBERG



Néstor Fernández



Jeremy Dertien



Nikolaj Poulsen



Emmanuel Ocegüera

## Co-lead



BIOPOLIS



Francisco Moreira



Ana Ceia Haase

## Other contributors



CONSEJO SUPERIOR DE INVESTIGACIONES CIENTÍFICAS



SAPIENZA  
UNIVERSITÀ DI ROMA



Virgilio Hermoso



Aimara Planillo



Luca Santini

Andrea Sacchi

# WP6: Multi-scale connectivity and corridor design

## Objectives

- Identify, **together with stakeholders**, the **ecological and landscape elements** and **planning instruments** that should define effective ecological corridors across scales.
- Develop a coherent **methodological framework and guidelines for mapping functional and structural connectivity**, including ecological corridors and stepping stones, at the European scale.
- Support adaptation policies by **identifying risks and opportunities for the establishment of connectivity in conservation and restoration plans under different climate and land-use change scenarios**.

# WP6: Some relevant outputs

# Survey of connectivity projects

- General information, location, duration
- Goals and scope
- Taxa and ecosystem types
- Policy context, target users, funding
- Approaches and outputs
- Assessments of results

*Provisional results:  
80 projects  
35 countries*

The screenshot shows the 'Public repository of ecological connectivity projects' website. At the top, there is a green header with the 'NATURA CONNECT' logo and 'Join us' and 'Login' buttons. Below the header, a title 'Public repository of ecological connectivity projects' is centered. A paragraph describes the project as an EU-funded Research and innovation action. Below this, there are search filters for 'Country', 'Spatial scope', 'Biogeographical region', 'Ecosystem types', 'Approaches for assessing connectivity', and 'Other benefits', all currently set to 'Nothing selected'. A 'Displaying 80 Projects' section includes a 'Show 25' button and a search bar. Four project cards are visible, each with a title, institution, description, and a set of ecosystem type tags.

Country	Spatial scope	Biogeographical region
Nothing selected	Nothing selected	Nothing selected

Ecosystem types	Approaches for assessing connectivity	Other benefits
Nothing selected	Nothing selected	Nothing selected

Displaying 80 Projects

Show 25

Search projects...

### Walloon ecological network design

University of Liège

No description provided

Forests Shrublands  
Grasslands Wetlands  
Rivers Agricultural areas

### Conservation of connectivity in the West Carpathians for large carnivores

Friends of the Earth Czech Republic

The project is aimed on conservation of large carnivore populations in the edge of their western distribution in the Carpathians. Activities contain detailed monitoring of wolf, lynx and bear population density and other demographic parameters, ...

Forests Grasslands  
Agricultural areas  
Urban and periurban

### European Biological Corridors

Eurac Research; Wageningen University; Fondazione Capelloni

EuroBIOCOR combines unique, multifaceted knowledges from ecological, economic and social sciences and a communication and dissemination approach to address the current challenges in building a coherent and resilient trans-European nature network of ...

Forests Grasslands  
Wetlands Rivers  
Agricultural areas

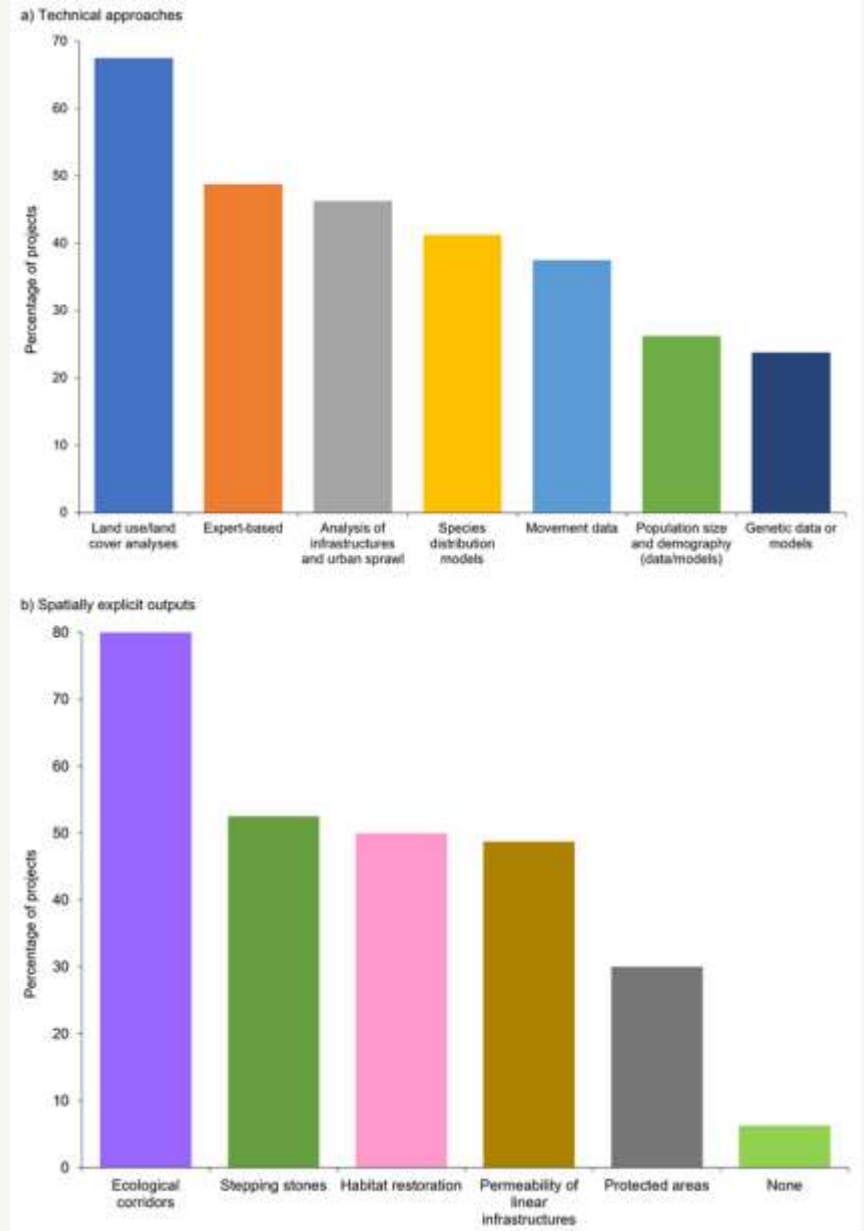
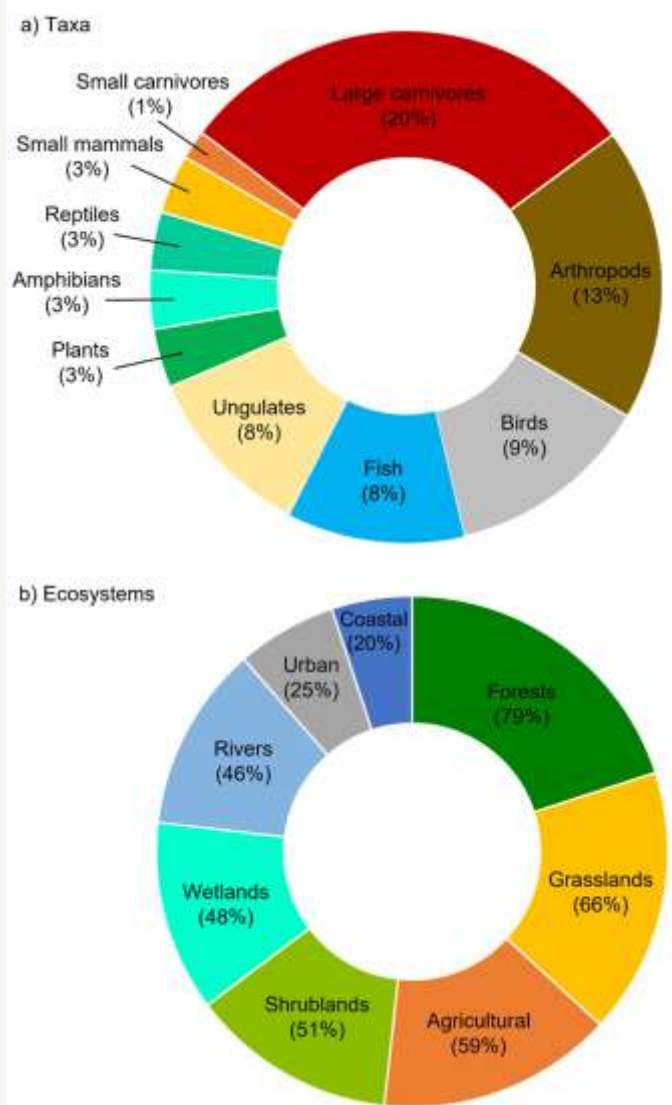
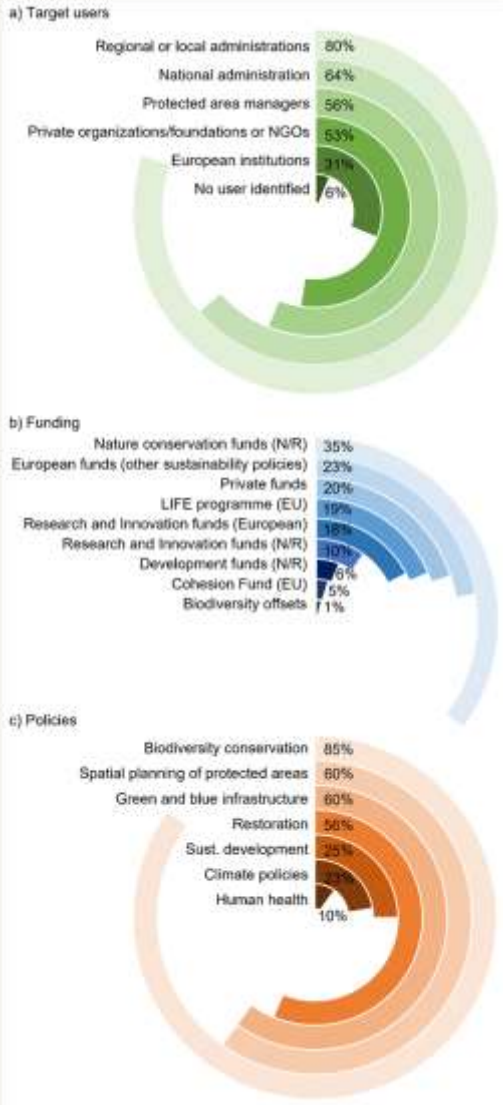
### Connectivity of riparian habitats in the Duero river basin, current situation and climate change scenarios

Catholic University of Avila

Climate projections point to an increase in temperatures and a decrease in precipitation, a situation that may compromise the connectivity of riparian habitats and aggravate fragmentation processes. This project has analyzed the variation in the ...

Forests Rivers

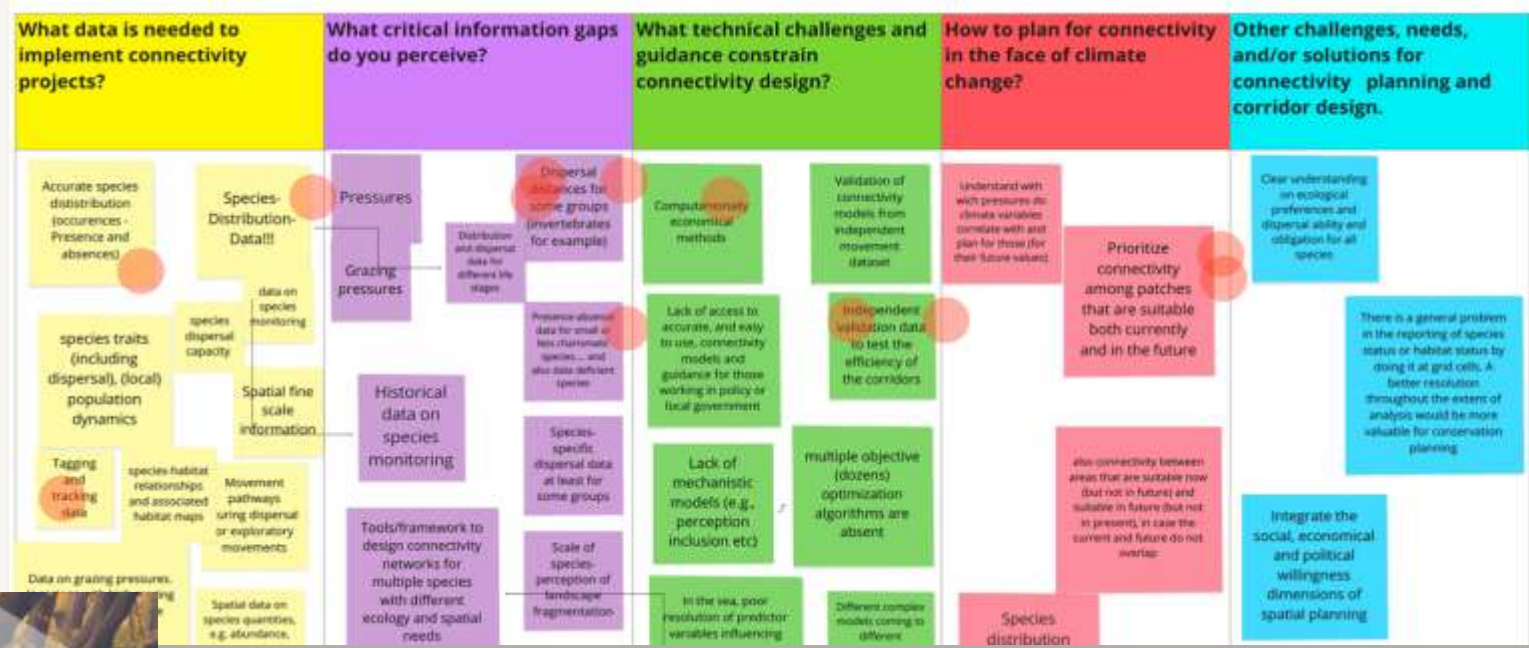
# Survey of connectivity projects



# Co-design with stakeholders

In-person workshop (May 2023)  
 Online workshop (23 & 24 Oct. 2023)  
 ~130 experts & stakeholders

EU, National & regional administrations, NGOs, private sector, research institutes & universities



Small text: Natural Connections is a leading centre in Europe for nature-based solutions research and innovation. Programme Leader and Expert Group Leader: NATURA CONNECT

naturaconnect.eu



# Guidelines for Connectivity in Europe

1. Connectivity concepts and approaches
2. Global & EU policy instruments addressing connectivity
  - EU Biodiversity, Forest, and G&B Infrastructure Strategies, GBF, etc.
3. Connectivity projects in Europe and information needs
  - Results and repository of projects
  - Priorities, gaps and challenges
4. Tools for connectivity modelling
5. General framework for connectivity conservation and planning

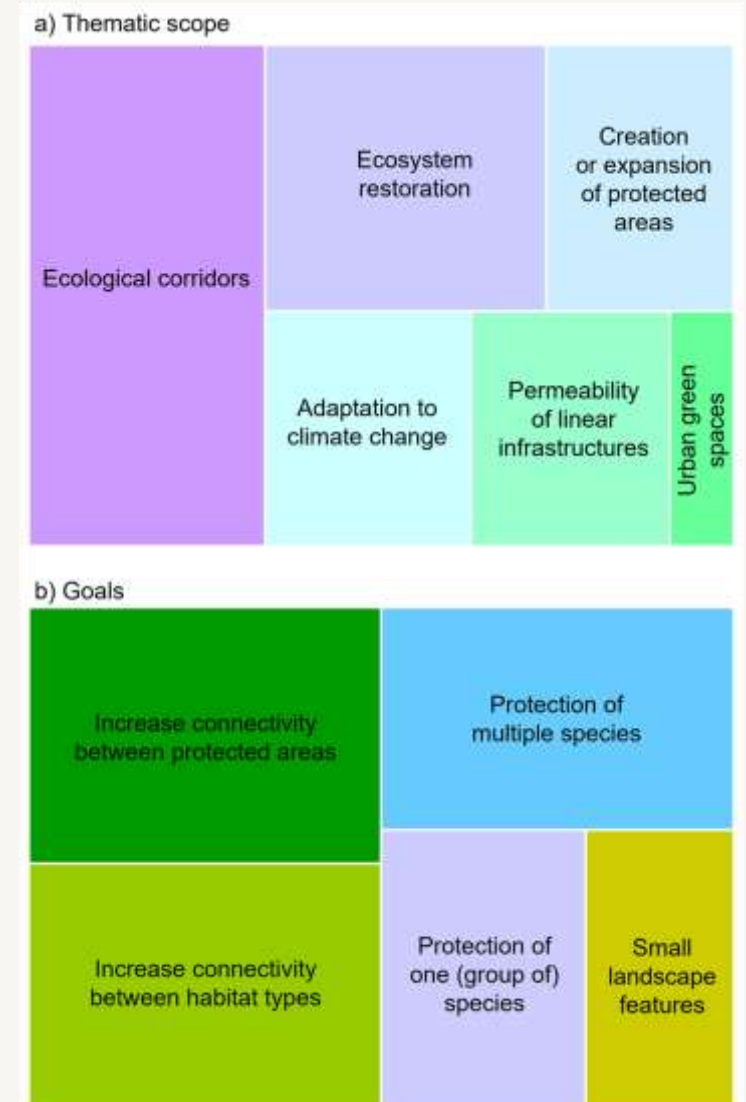


# Some identified challenges for implementing ecological connectivity projects in the European context

## □ A diversity of objectives

- (i) species and habitat targets;
- (ii) ecosystem services;
- (iii) mitigating impacts from infrastructure (e.g., locations for green bridges or underpasses; prioritising dam or road removal);
- (iv) connectivity planning in urban/peri-urban areas;
- (v) multi-functional corridors (combining species conservation, ecosystem services, recreation, and other goals).

These objectives should be clearly identified in advance, as different objectives will be adequate for different contexts, and have implications for setting the adequate spatial and temporal scales.



## □ Structural or functional diversity



**Functional connectivity**  
(species-oriented)



Circuit analyses

Graph analyses

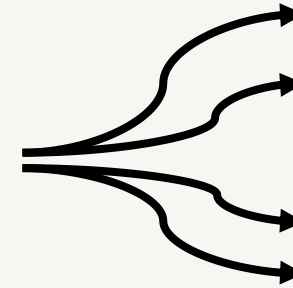
Landscape  
elements

**Structural connectivity**  
(landscape metrics)



Habitat types

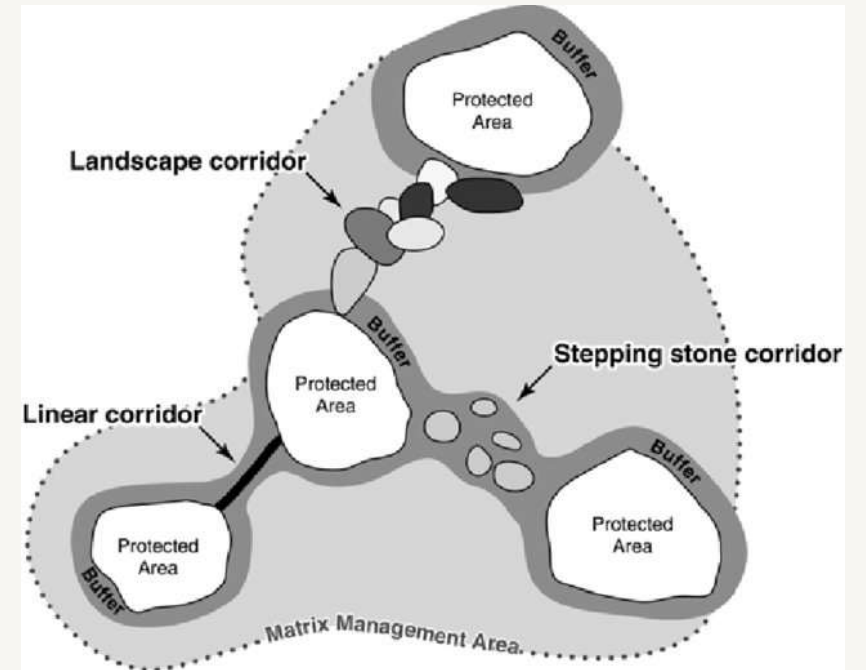
Landscape metrics



**Corridor  
solutions**

## □ Protected areas and ecological corridors

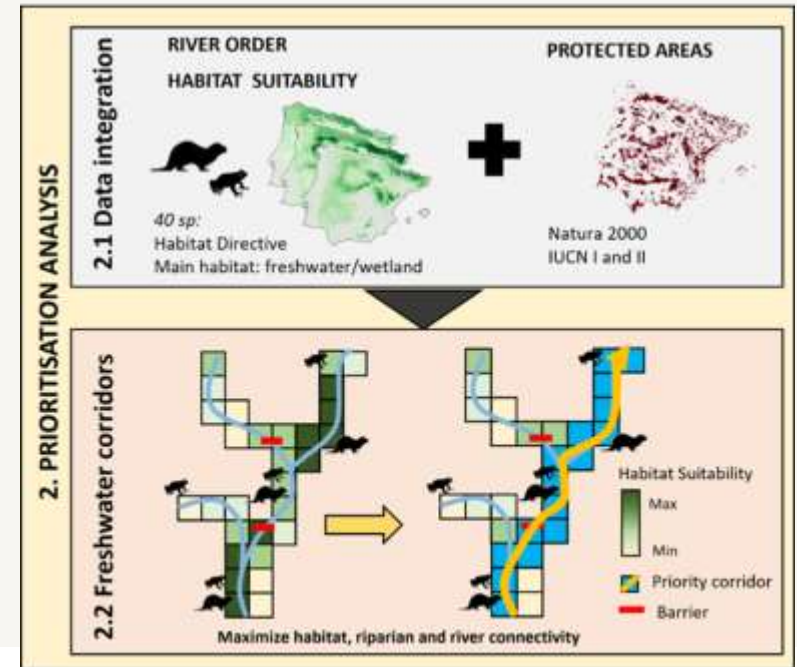
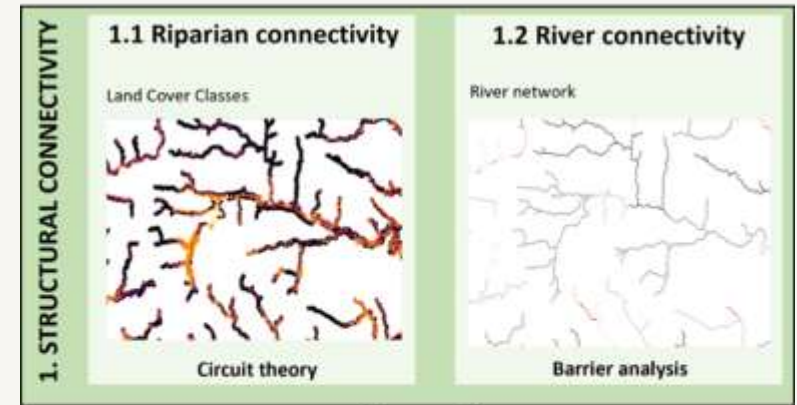
- (i) The goal of corridors is to maintain or restore connectivity between natural areas of conservation interest, although they can also contribute to conserving biodiversity along the corridor.
- (ii) The main objective of protected areas is in situ conservation, although they may contribute to the overall connectivity of the protected areas network.
- (iii) rather than being composed of a specific habitat type and targeting a single set of species with the same habitat requirements, corridors may consist of a combination of land uses that increase the permeability to movement of different types of organisms
- (iv) Still many uncertainties on “how wide” should a corridor be.



Mackey B, Watson J and Worboys GL of ANU Enterprises Pty Ltd 2010

# □ Freshwater connectivity

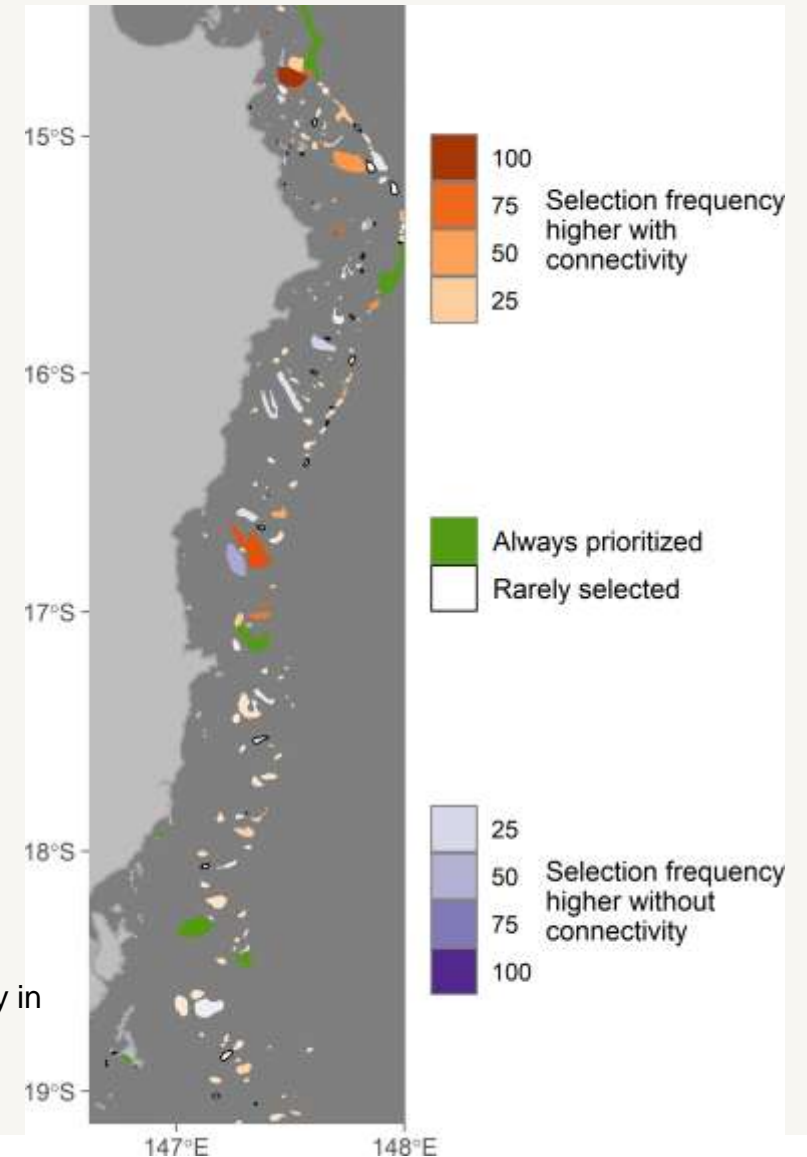
- (i) rivers should be considered priority features to maintain or enhance connectivity.
- (ii) connectivity acts on four dimensions (longitudinal, lateral, vertical, temporal).



## □ Connectivity in systematic conservation planning

- (i) the issue is whether (current) connectivity should be included in spatial conservation planning, or if protected area selection should be strictly based on biodiversity values, with planning ecological corridors being made at a subsequent stage.

Daigle RM, Metaxas A, Balbar AC, et al. Operationalizing ecological connectivity in spatial conservation planning with Marxan Connect. *Methods Ecol Evol.* 2020



## ❑ Issues of spatial scale

- (i) The scale of analysis and conservation action should be linked to species ecological traits, particularly their dispersal capacities.
- (ii) Local scale, landscape scale, regional to continental scale.

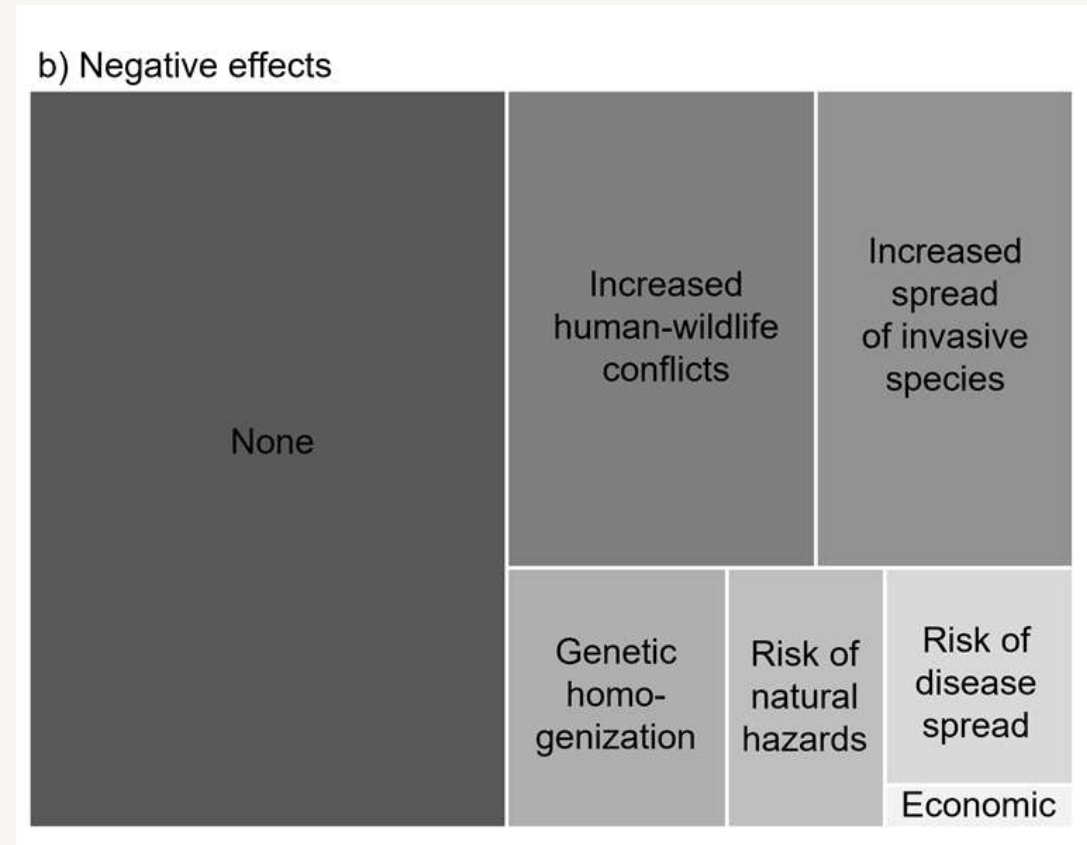


iNaturalist



Wikipedia

## ❑ Drawbacks of increased connectivity



# Connect with NaturaConnect!

 [www.naturaconnect.eu](http://www.naturaconnect.eu)

 [naturaconnect@iiasa.ac.at](mailto:naturaconnect@iiasa.ac.at)

 [facebook.com/NaturaConnectProject](https://facebook.com/NaturaConnectProject)

 [linkedin.com/company/naturaconnect/](https://linkedin.com/company/naturaconnect/)

 <https://bsky.app/profile/naturaconnect.bsky.social>



Scan the code to visit our website!

9 Abril 2026



---

# Pressão humana, resiliência climática e robustez analítica numa rede otimizada de corredores ecológicos em Portugal

---

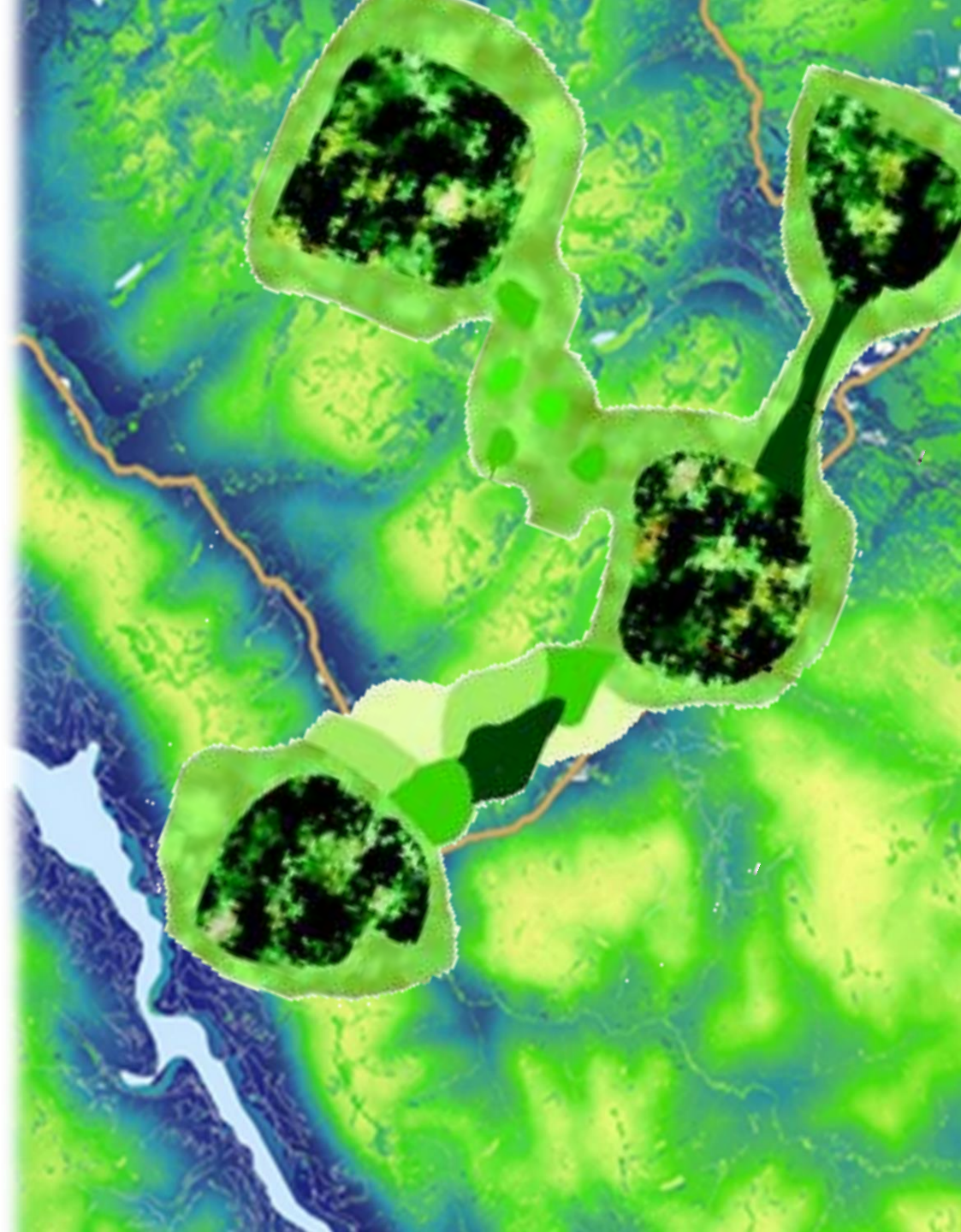
Diogo Alagador  
alagador@uevora.pt



MED

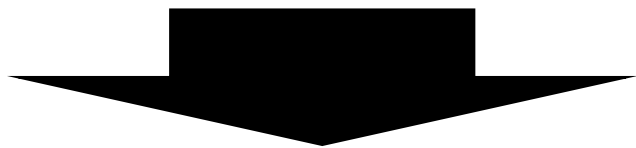


UNIVERSIDADE  
DE ÉVORA



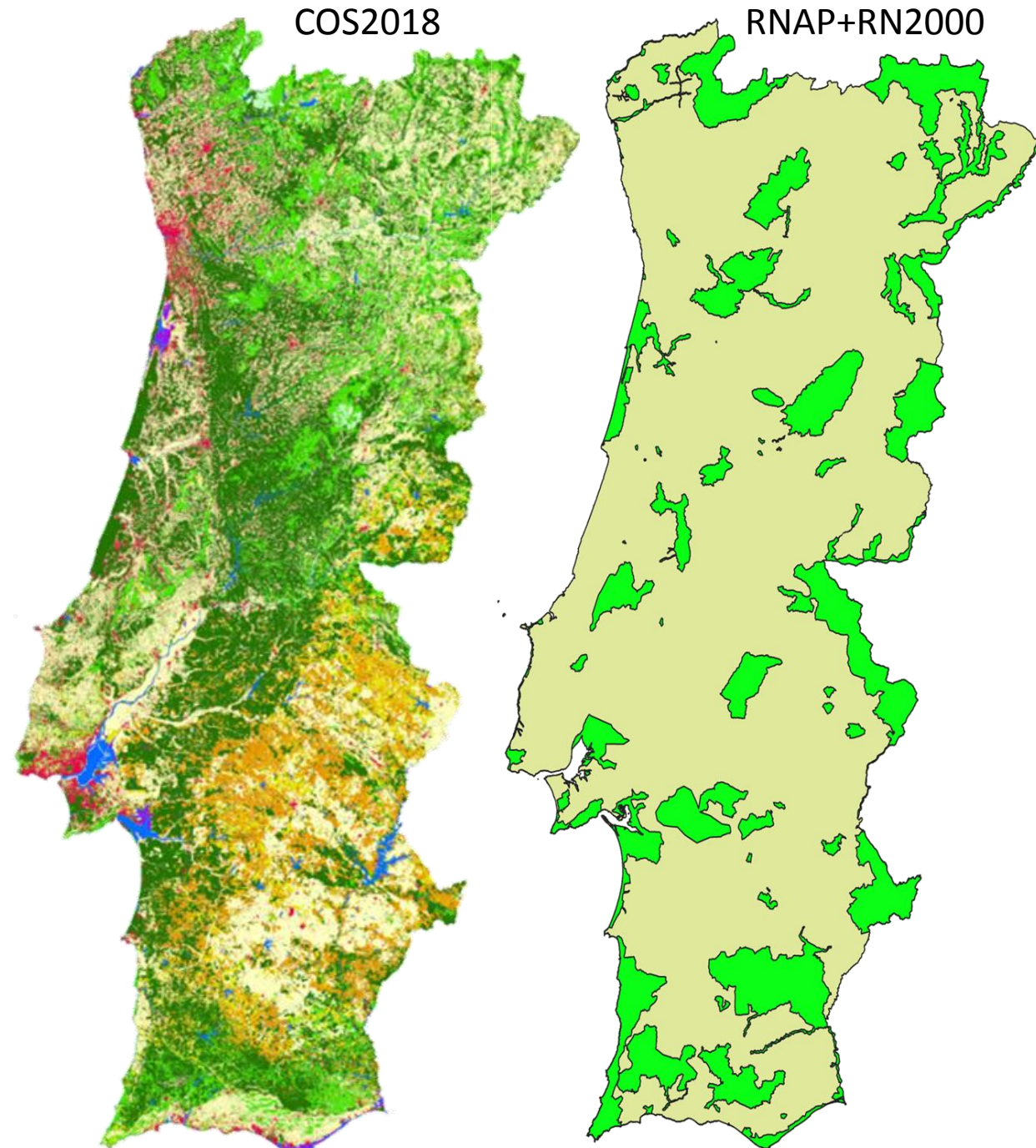
Rede Nacional Áreas Protegidas  
Rede Natura 2000

representação elementos locais  
distribuição pelo território  
fragmentação e exposição a pressões  
alguns isolados de pequena dimensão

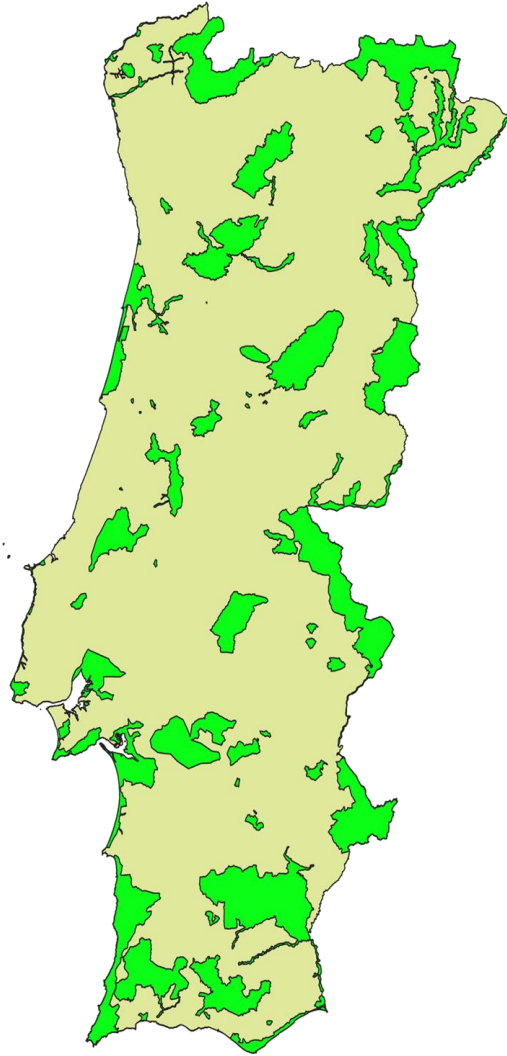


Rede funcional, persistente e  
ecologicamente robusta

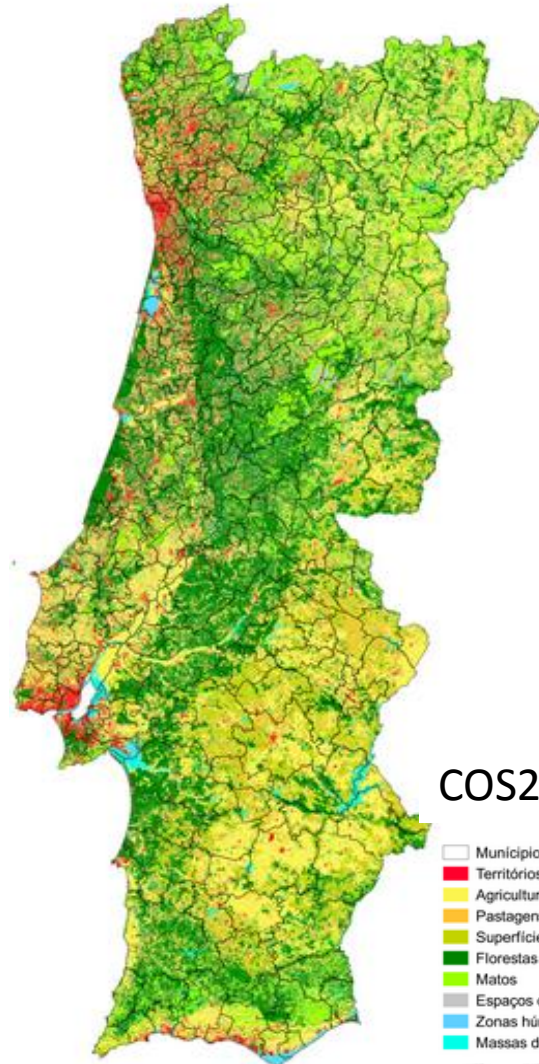
*Rede Transeuropeia de Natureza (TEN-N): A criação de uma rede "verdadeiramente coerente" que ligue as áreas protegidas através de **corredores ecológicos** para prevenir o isolamento genético e permitir a migração de espécies (Estratégia Europeia Biodiversidade)*



# Natureza dos dados



RNAP  
RN2000



COS2018

- Municípios
- Territórios artificializados
- Agricultura
- Pastagens
- Superfícies agroflorestais
- Florestas
- Matos
- Espaços descobertos
- Zonas húmidas
- Massas de água superficiais

Uso do solo



MDE – variab altitud (rugusidade)  
MDE – orient vertentes

Índice continentalidade

Clima

# A metodologia da conectividade

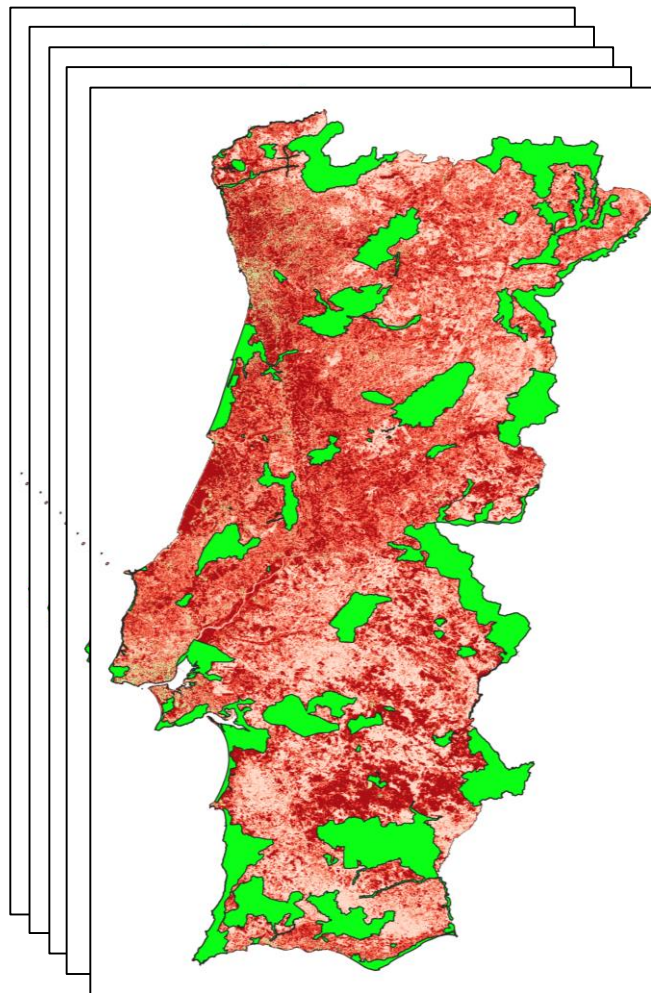
Resistência territorial

*Ominiscape*

Resistência climática



uso  
solo



Resistência

CL1 - 5km

CL1 - 20km

CL1 - 50km

CL2 - 5km

CL2 - 20km

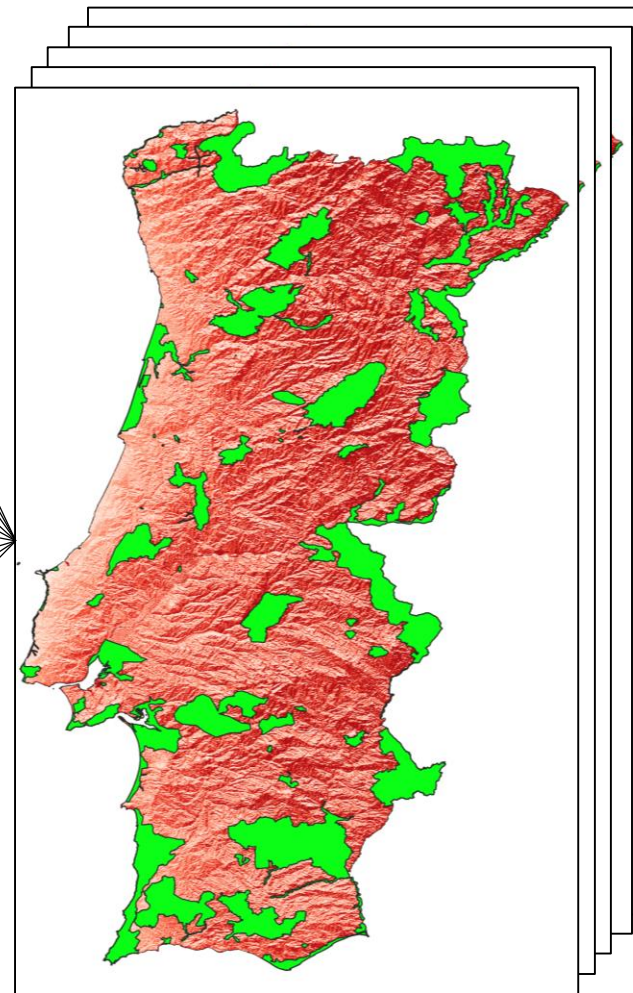
CL2 - 50km

CL3 - 5km

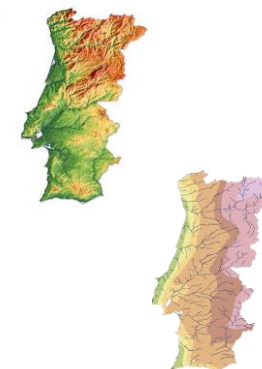
CL3 - 20km

CL3 - 50km

3RT x 3RC X 3DISP



Resistência

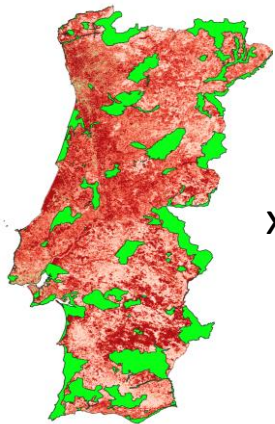


estab  
climat

# A metodologia dos corredores

$$\boxed{3RT \times 3RC \times 3DISP} = 297 \text{ soluções}$$

X  
**11**



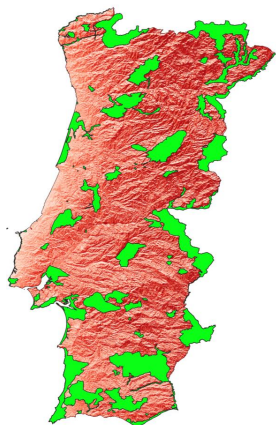
RT

x  
0.0  
0.1  
0.2  
...  
0.9  
1.0

+

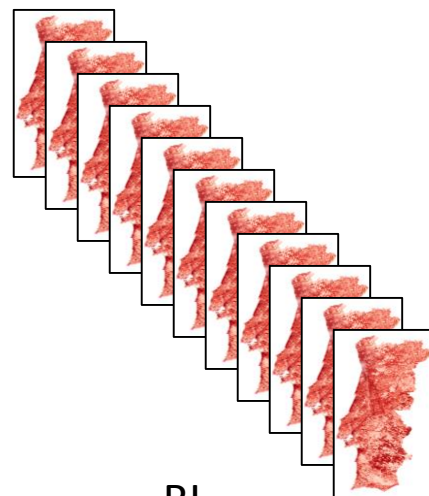
1.0  
0.9  
0.8  
...  
0.1  
0.0

x



RC

=

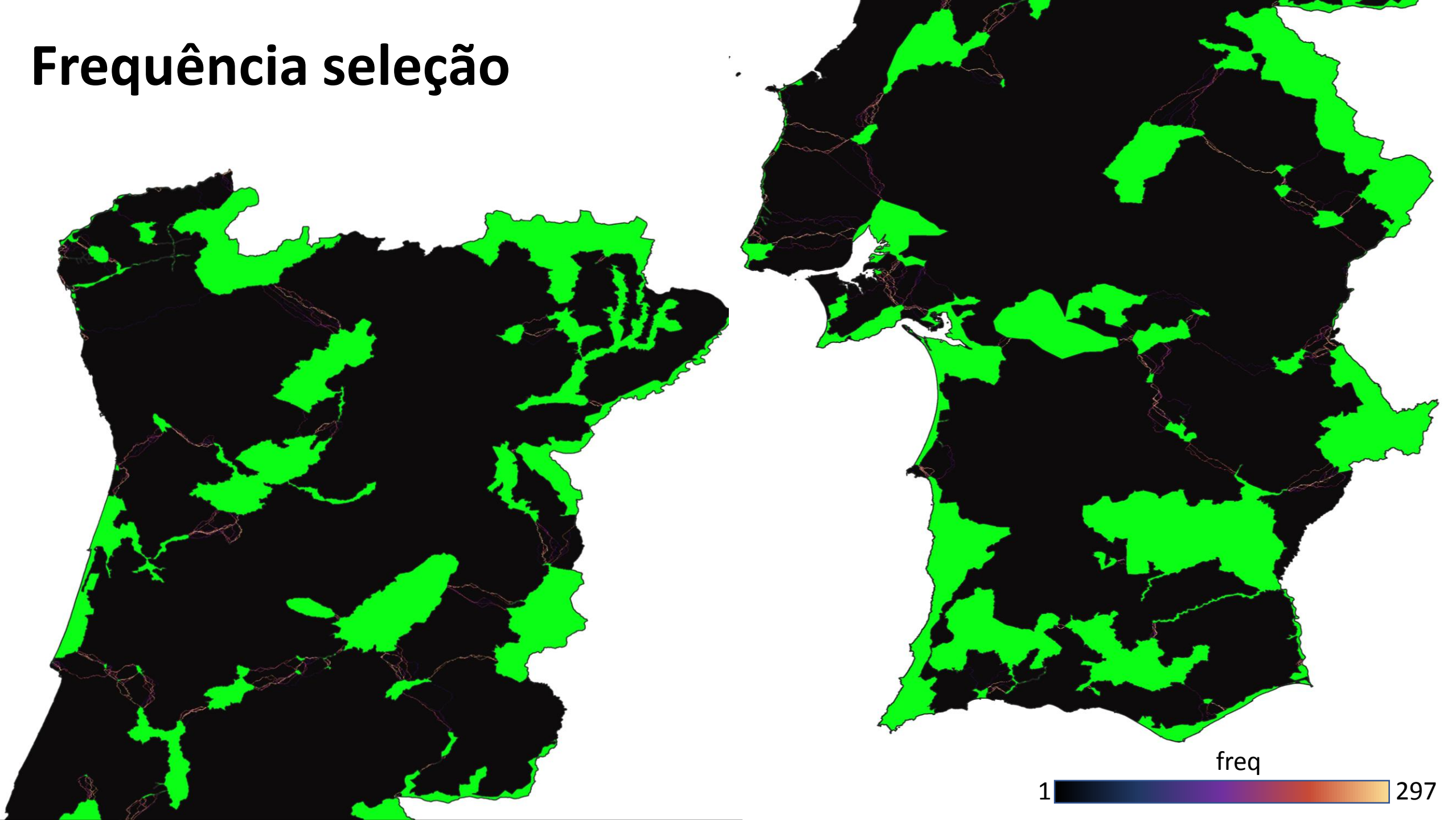


RI

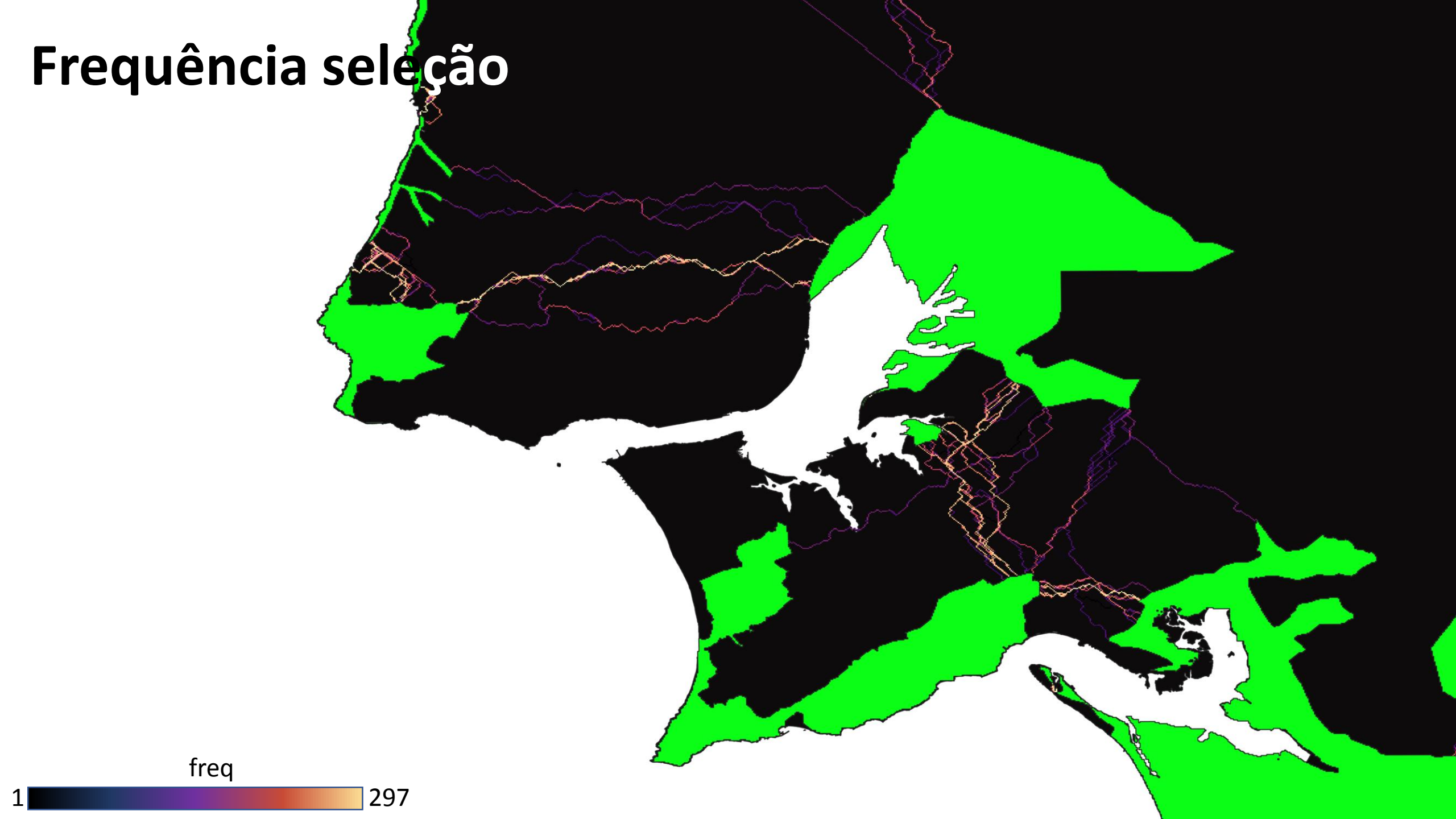
*MulTyLink*



# Frequência seleção



# Frequência seleção



freq

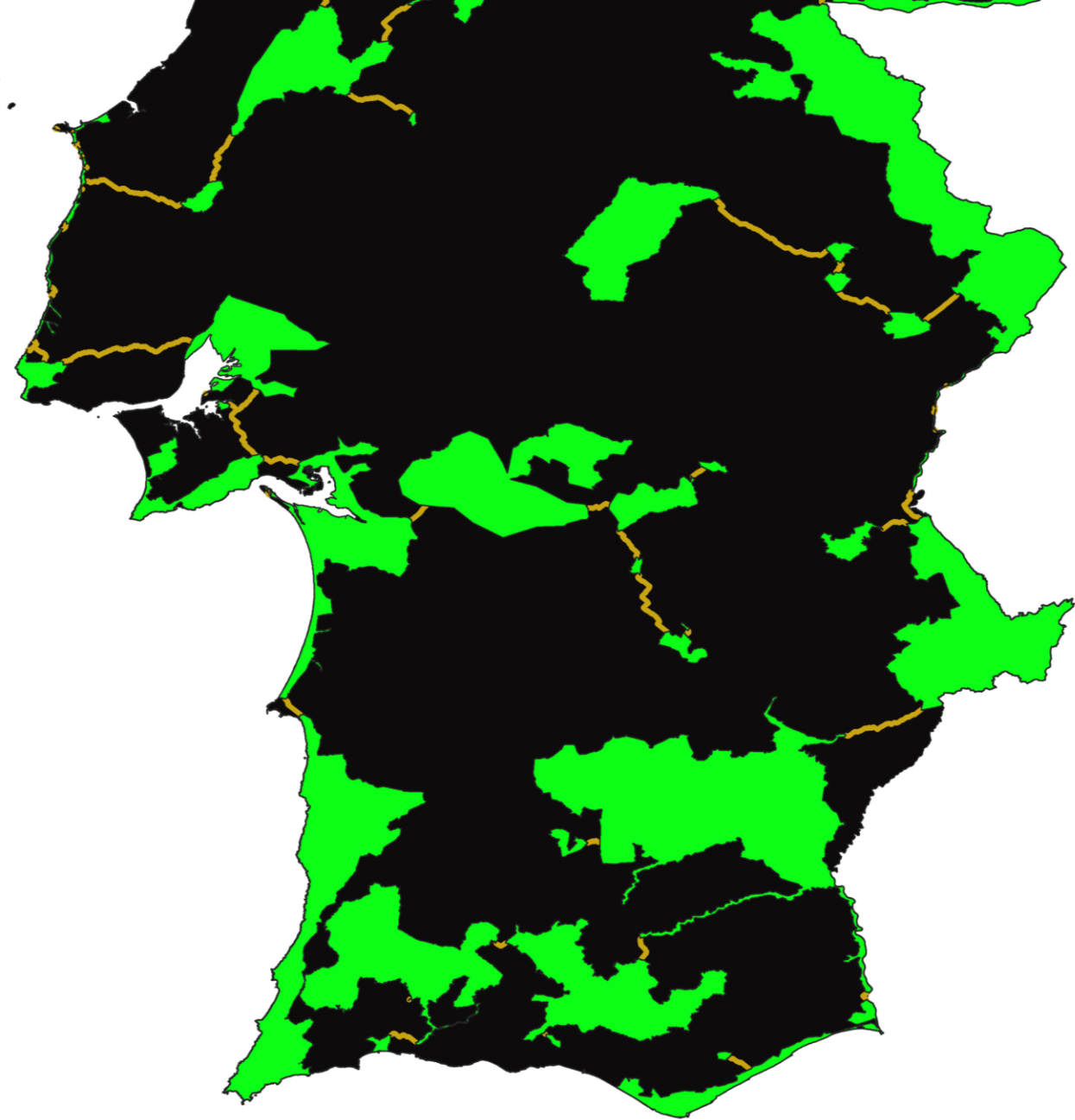
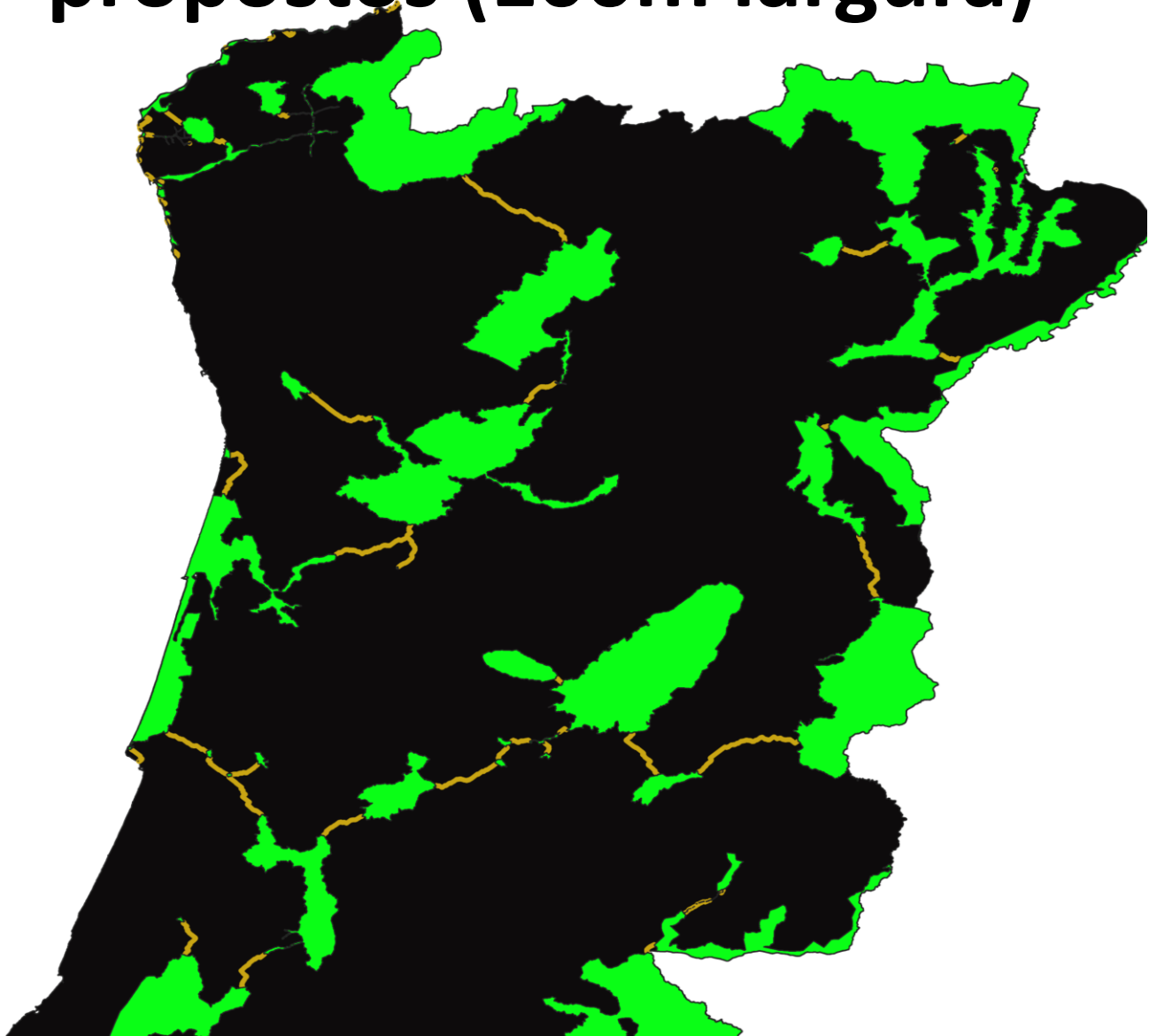
1 297

# MuTyLink

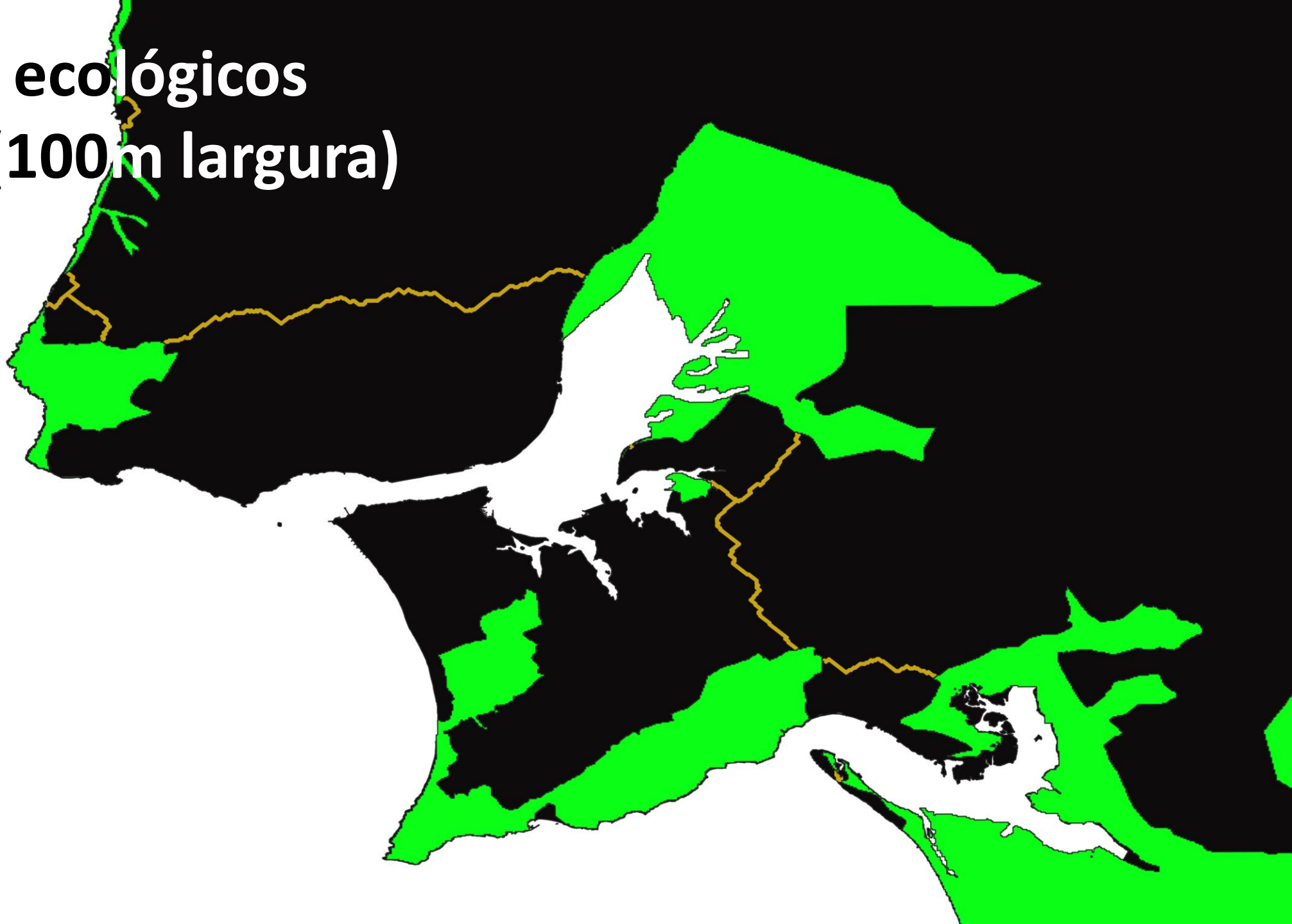
freq



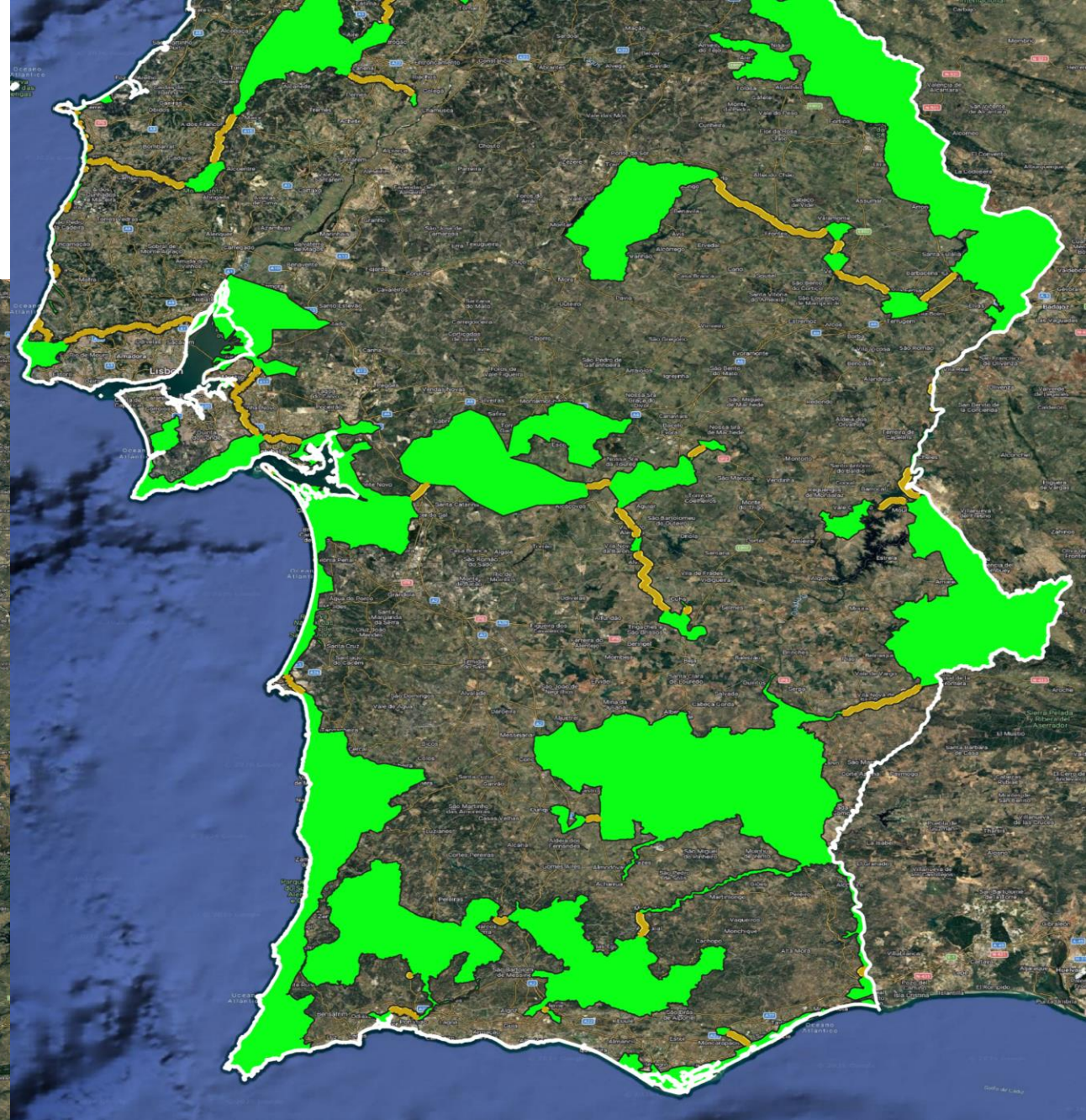
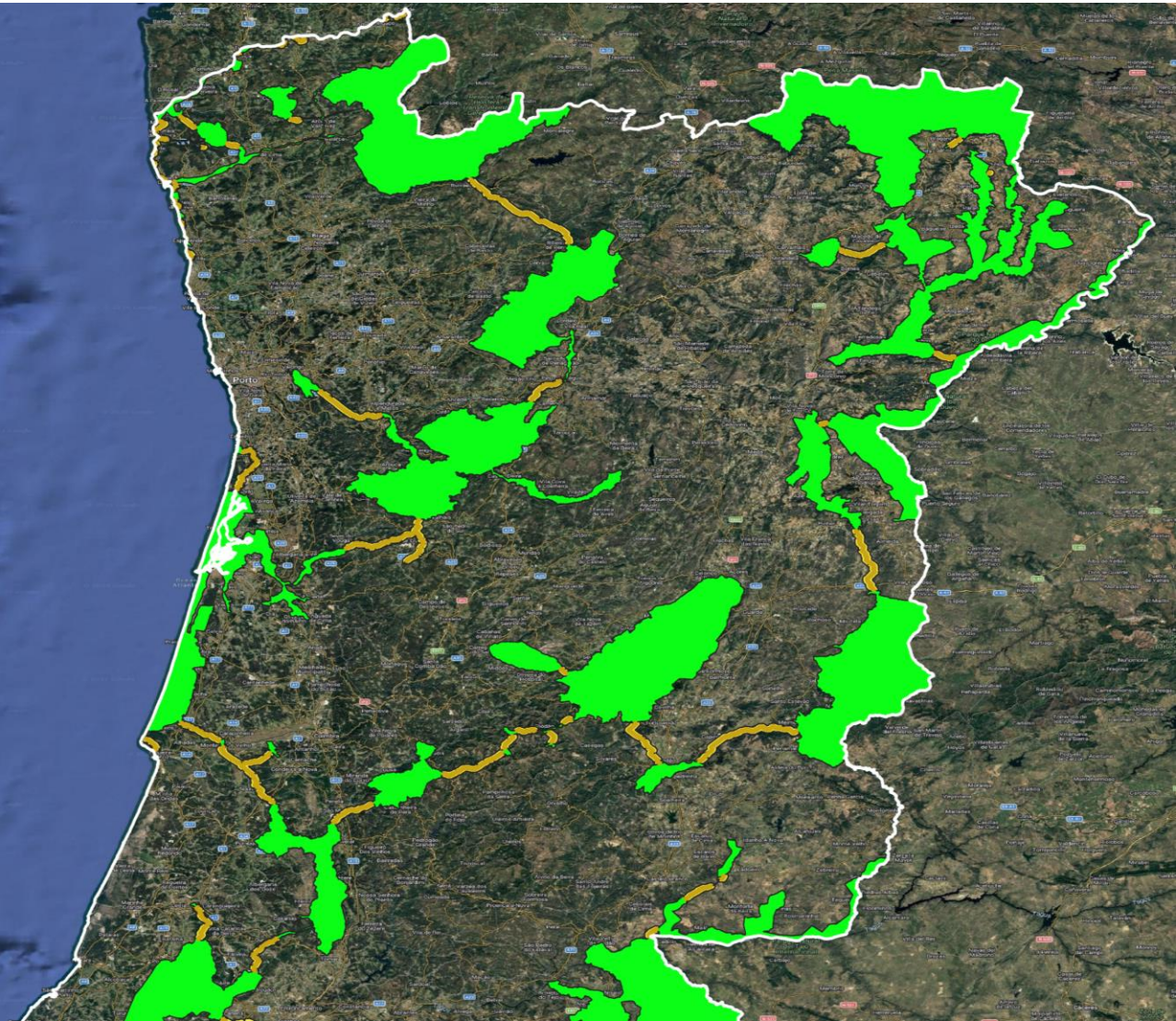
# Corredores ecológicos propostos (100m largura)



# Corredores ecológicos propostos (100m largura)



# Corredores ecológicos propostos (2km largura)

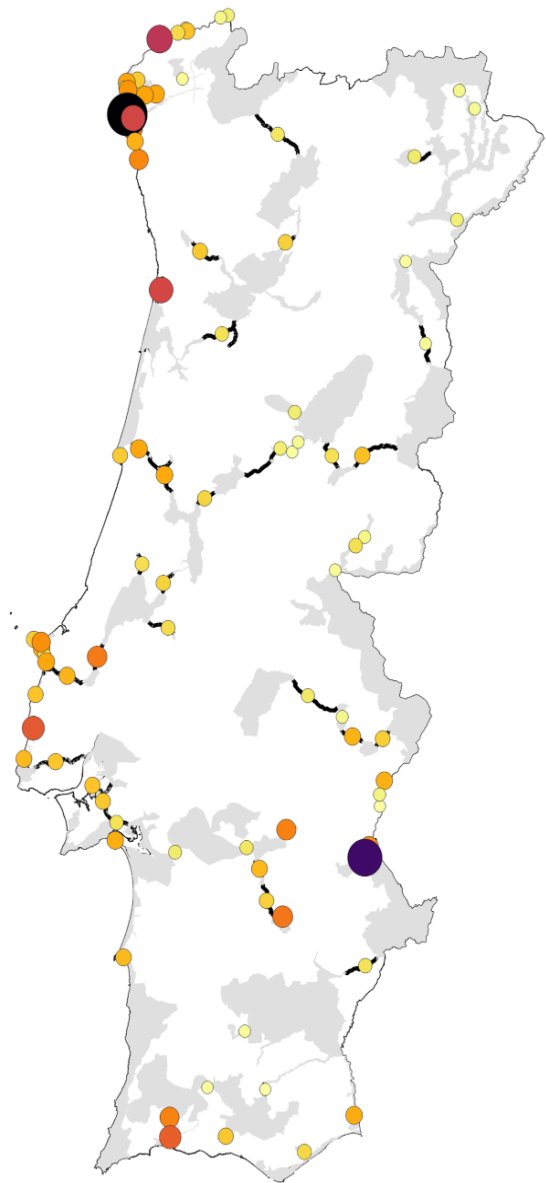


# Corredores ecológicos propostos

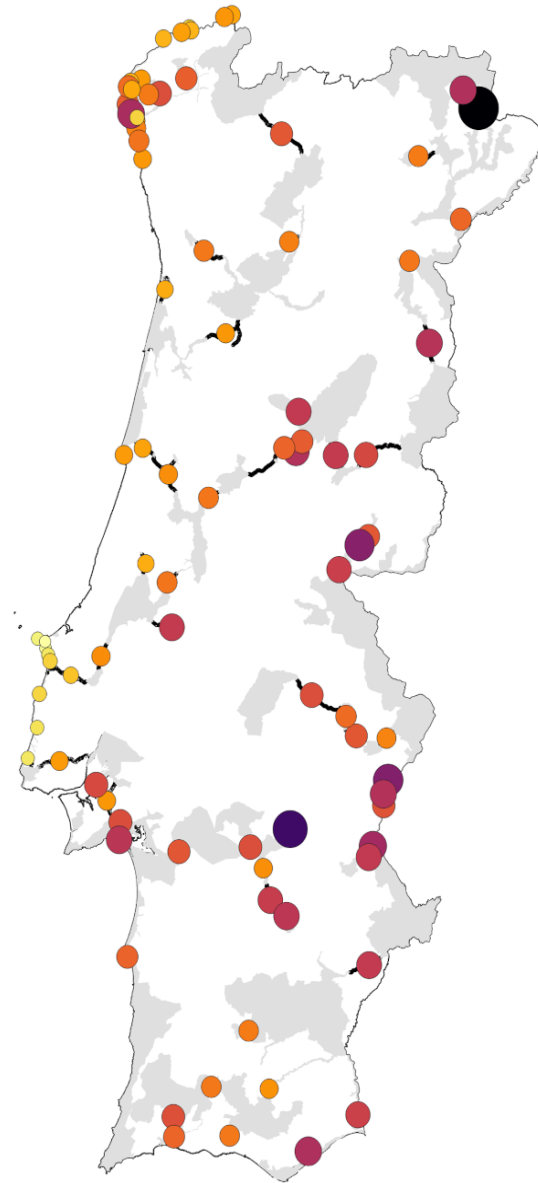


# Valor contextual dos corredores

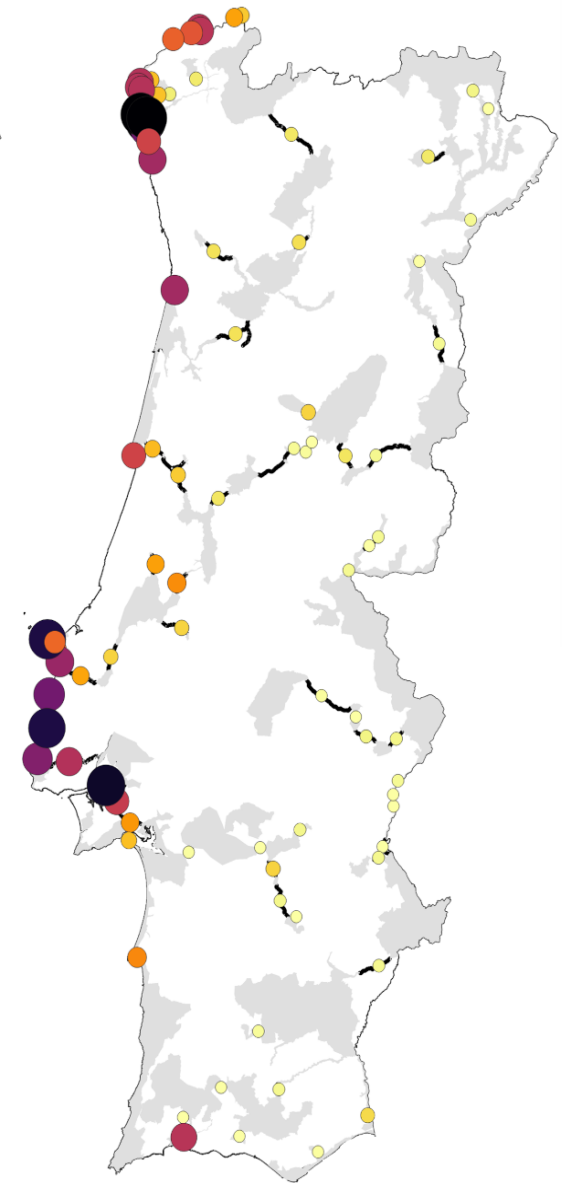
Resist territorial média



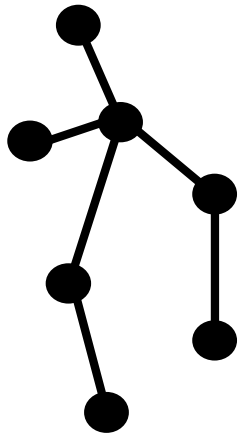
Resist climática média



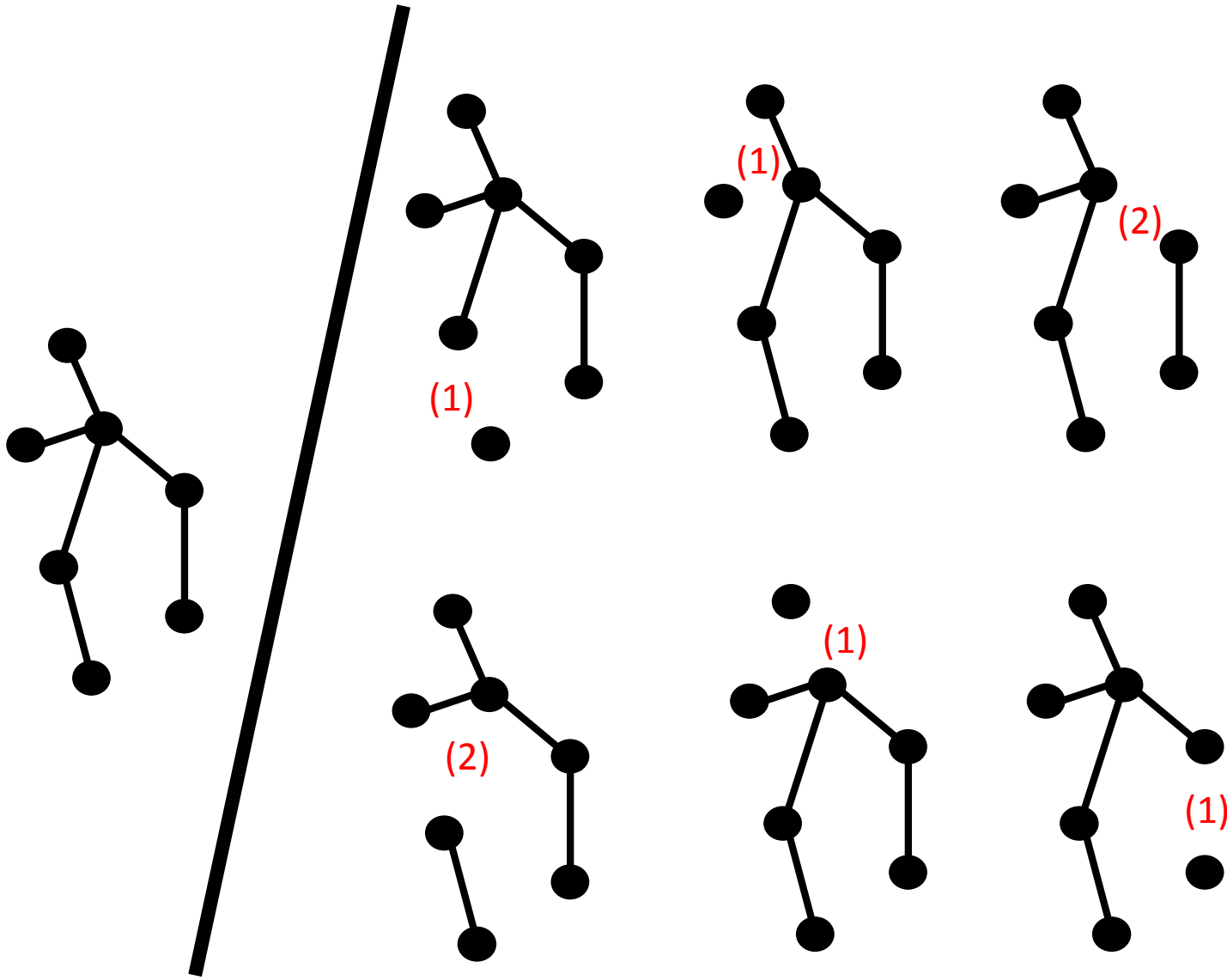
Densidade habitat degradado



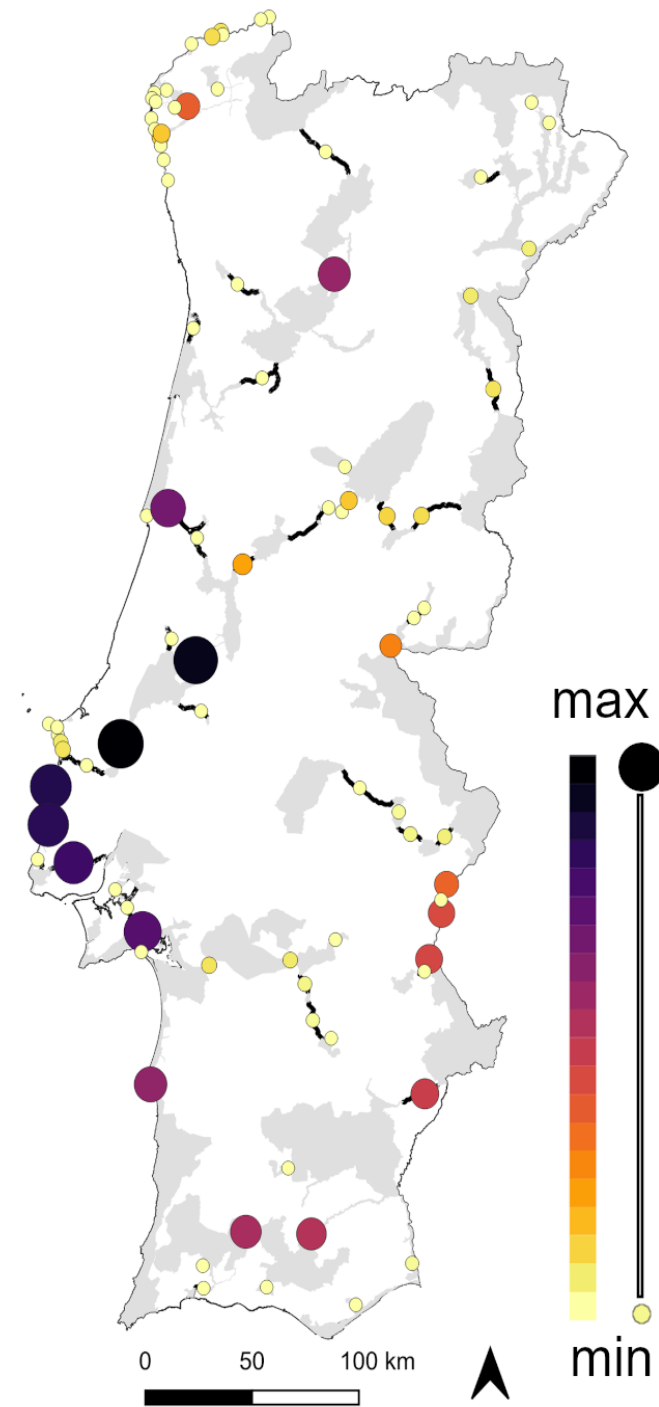
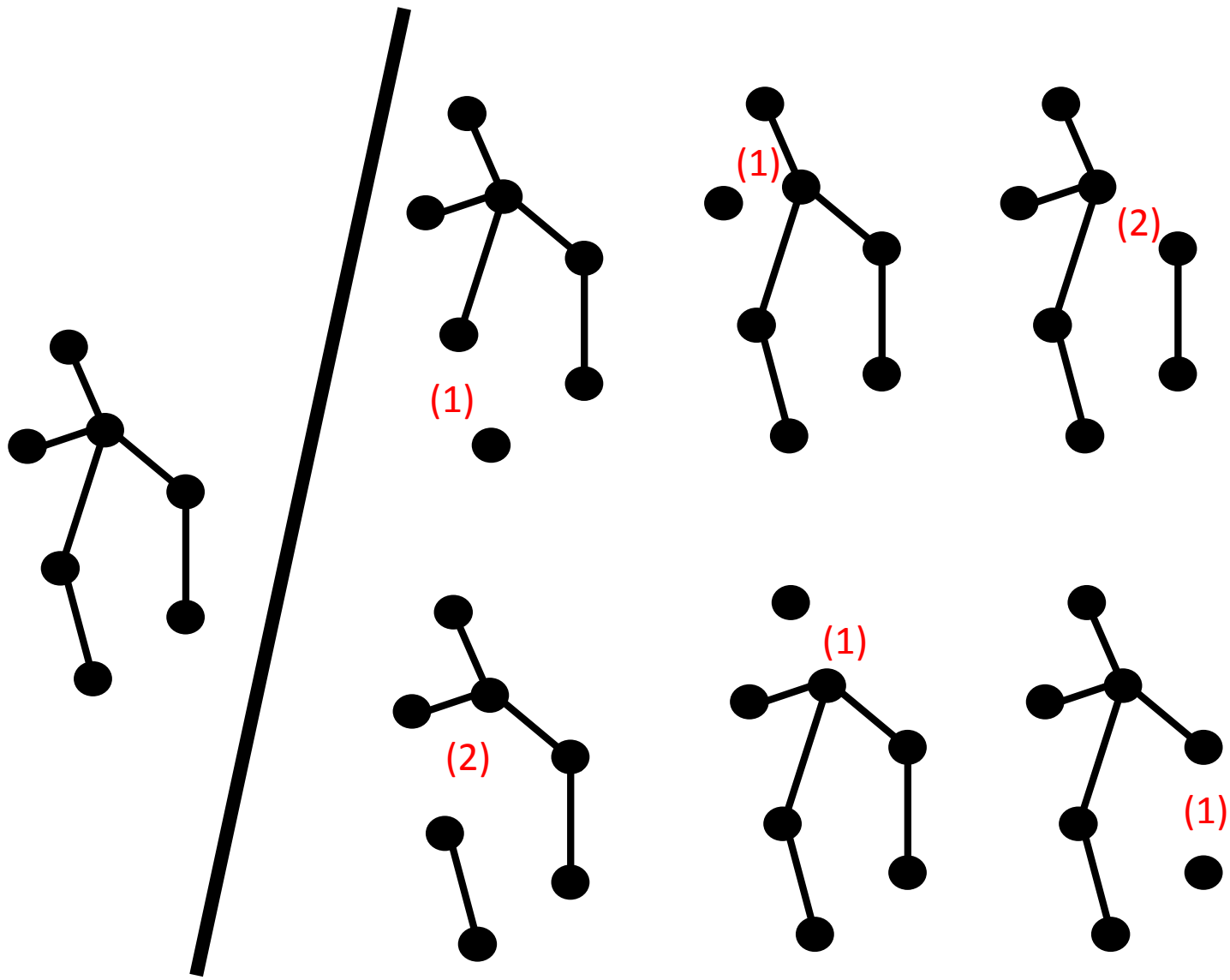
# Valor dos corredores na rede



# Valor dos corredores na rede



# Valor dos corredores na rede





# Valor e perspectivas

Priorização de corredores (topologia do sistema)

Gestão para uso ou para o clima

Complemento da REN

Alterações climáticas explícitas

Paradigma ibérico (corredores transfronteiriços)

9

Webinar  
abril 2026  
10:00-12:00 GMT

**Metodologias e ferramentas para a criação de corredores ecológicos e expansão de áreas protegidas: o contributo do projeto NaturaConnect**

© Sandra Grego | EUROPARC Federation



Funded by  
the European Union

NaturaConnect receives funding under the European Union's Horizon Europe research and innovation programme under grant agreement number 1011060429

Diogo Alagador  
alagador@uevora.pt